

## XenServer Applications Group : General Tab - combined with CPU & Memory

---

This page last changed on Nov 10, 2009 by [emellor](#).

<b>Revision History Who?</b>	<b>What?</b>	<b>When?</b>
Johnni	created page, after some versions in email	7/20/07

This page covers the updated designs for the [XSAG:[XenCenter](#)] and the combining of the General tab, and the CPU & Memory tab.

There are 2 basic designs, one for the server and one for the VM

### **Recent changes**

removed the slider for memory, doesn't make sense to have a value such as Min/Max and diferent sorts of OS would have different values, so we removed it all together.

### **Purpose for redesign...**

Reduce the amount of tabs overall

Clean up the overall design of the panel

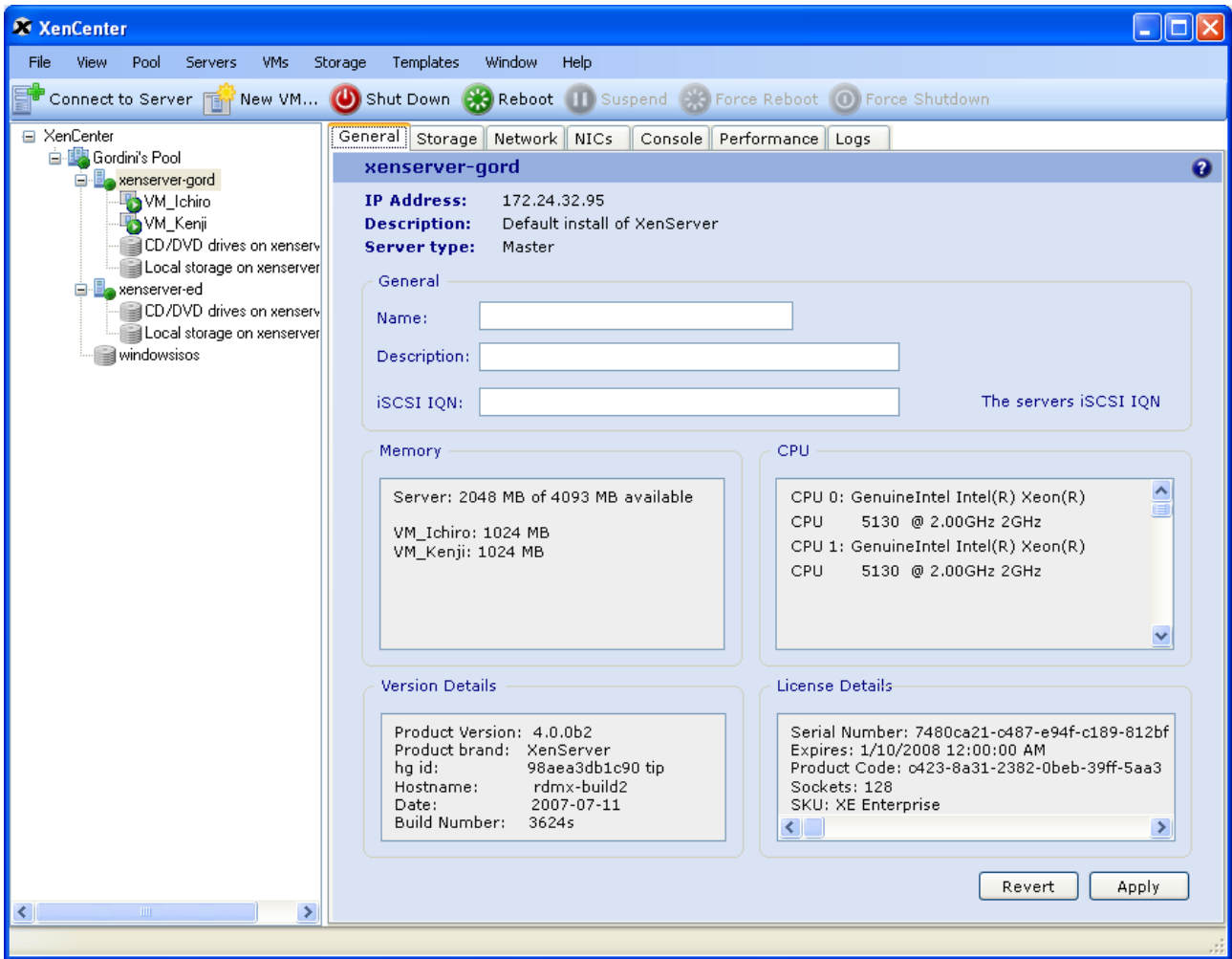
We are displaying less properties than we were originally, so it makes sense to do some clean-up

### **Tab order basics -**

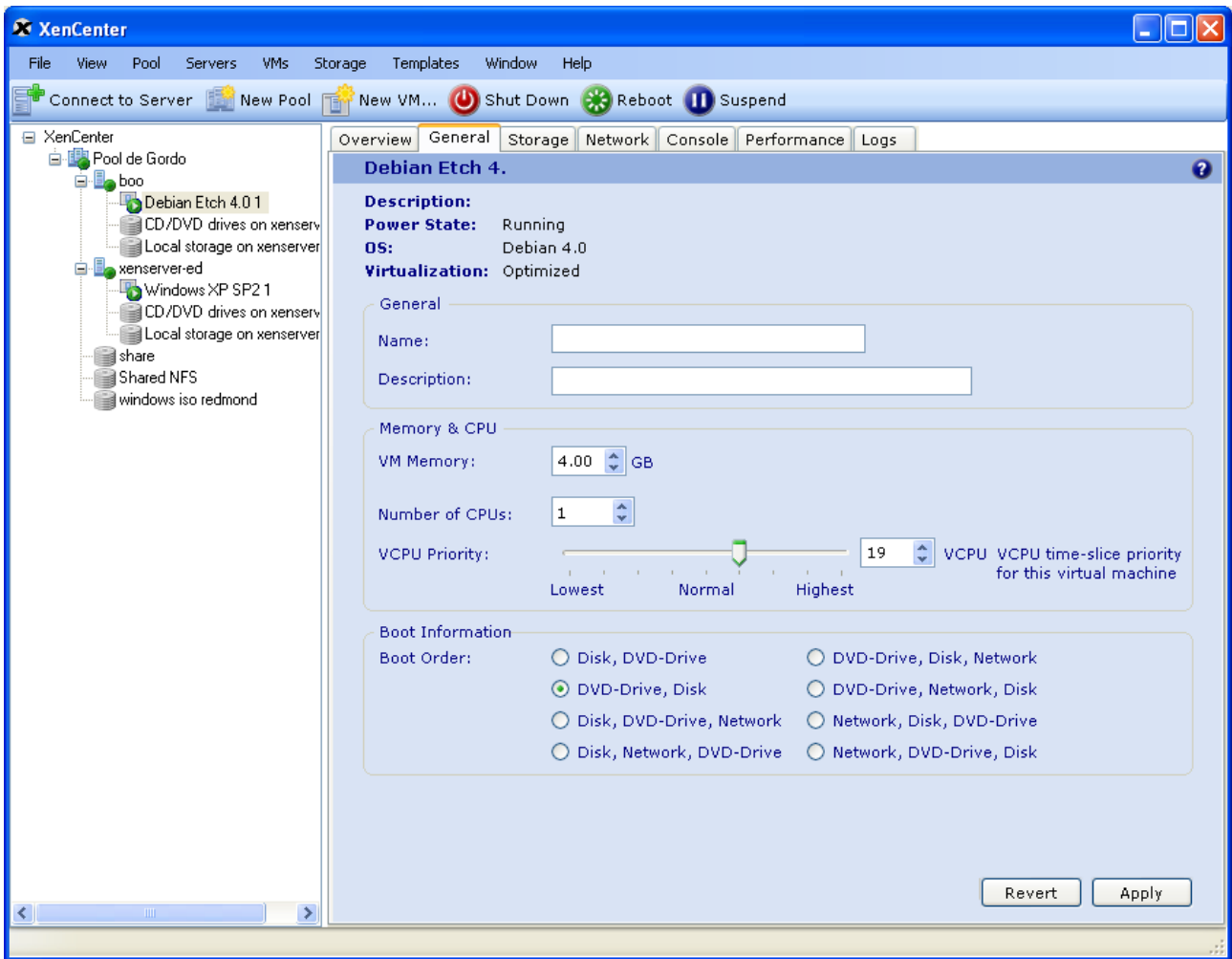
- Set the order for the tabbing (for western countries), left-to-right and top-to-bottom. Beginning at the top right.
- Navigating to a textual label for a control should put input focus in-side that control, such as a list box
- When using the tab key to navigate to an textual control (alpha or numerical control), if the control has a default text or number in the control, tabbing to the control will "select" (highlight) all of the characters in that control.
- Grouped controls, such as radio buttons, the tab key is used for moving the input focus to the current "set choice" in the group, and use the arrow key to move between individual options.
- The arrow key will navigate between chioces in groups, such as radio buttons, list boxes and dropdown menus.
- In a numeric spin control the up and down arrow keys will increase or decrease the value of the number in the control.

**Scrolling** - If the application window is smaller than the layout, scrollbar should be present to enable access to the screen

### **General Tab (Server)**

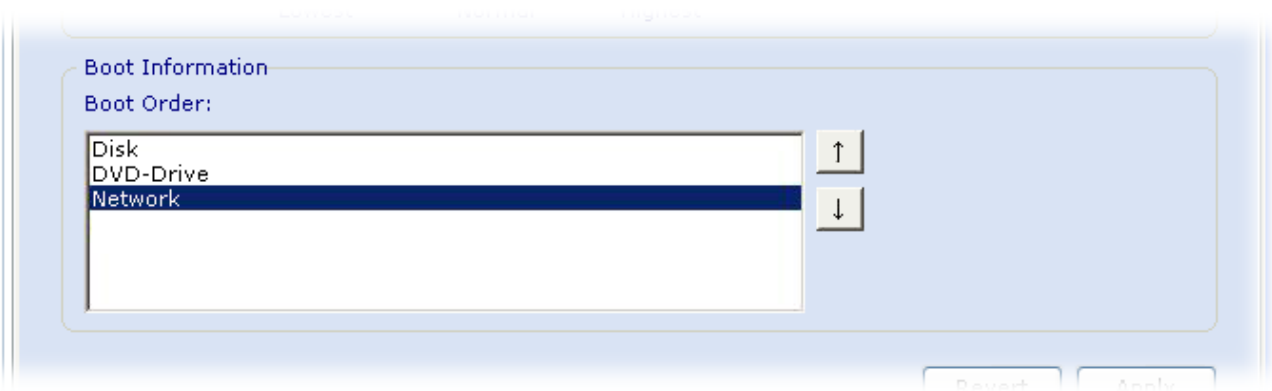


**General Tab (VM)**  
**Windows - v1 (boot order)**



**General Tab (VM)**

**Windows** alternate boot order, if possible  
(this addresses bug # CA-8188)



**General Tab (VM)**

**Debian**

