

Engineering Projects : History Pane




This page last changed on Apr 25, 2007 by jaguirre.

03/14/2007






History Who	When	What
Johnni	3/14/07	Document created
Johnni	4/25/07	Added dock and undock feature. Changed selection mechanism to checkbox from dropdown. Added new screenshots

The history tab will display the data of the selected node in the tree.

There are 3 types of history that will be displayed in the UI

- Alerts 
- Commands 
- Activity 

Other icons

- plus.png  (expands selected history pane)
- minus.png  (contracts the selected pane)
- clear_16.png  (is used in the filter widget to clear the history data from the page)
- undock, detach_16.png 
- dock,attach_16.png 

The history will display all the alerts, commands, activities that have taken place during that session of the Xen Admin.

The **newest history will appear on the top**. All history data will be sorted by date.

Filter - The user will be able to filter the history, the default is show all. All of the checkboxes will be checked The checkbox will indicate which history should display. The checkbox choices are:

Alerts
Actions
Information

Clear all - The clear all button will clear the history from the system

Dock/Undock - Clicking in the "udock" button will undock the history pane. In the undocked history pane, clicking on the dock button will return the pane to its original position.

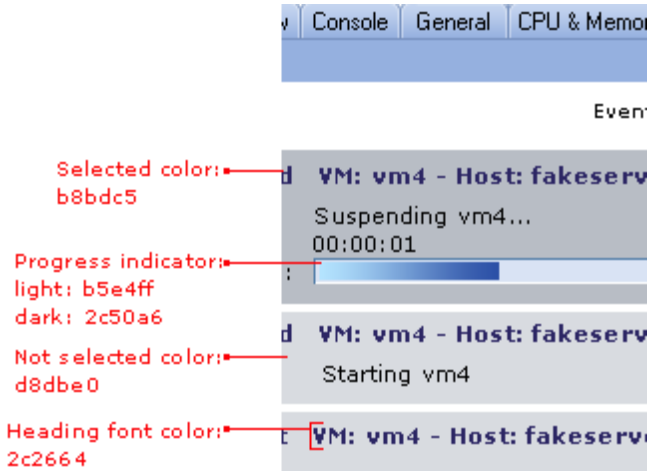
Expand/Contract - Each history field will have the ability to expand and contract. An active history field will be expanded by default. An inactive history field will be contracted by default. An active history field

will have a progress indicator that displays the progress of the described action.

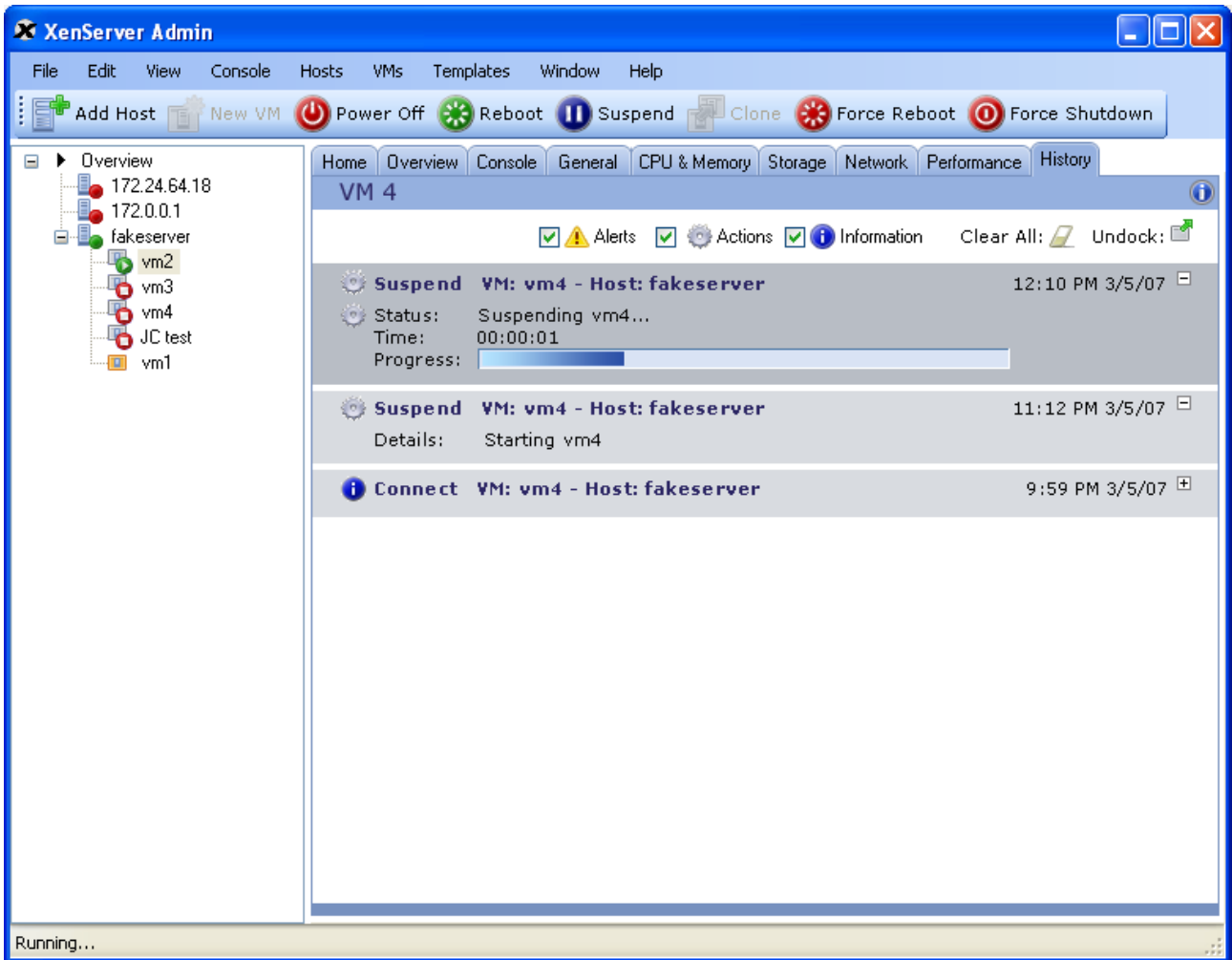
Fonts:

Verdana is used throughout

Colors:



Main Screen with docked history pane



Undocked history pane

XenServer Logs [Window Title Bar]

VM 4

Alerts Actions Information Clear All: [Icon] Dock: [Icon]

Shutdown Status:	Server: fakeserver	VM: vm2	8:56 AM 3/29/2007
Started Status:	Server: fakeserver	VM: vm1	8:15 AM 3/29/2007
Started Status:	Server: fakeserver	VM: vm2	8:05 AM 3/29/2007
Shutting down Status:	Server: fakeserver	VM: vm3	7:56 AM 3/29/2007