

## Engineering Projects : Storage - VM's and storage

This page last changed on May 04, 2007 by jaguirre.

Revision History Who	Date	Changes
Johnni	3/20	Created
Johnni	3/21	Removed "agile" selection to read only shared; yes, no read only display. this will depend on whether SR selected was shared or not.
Johnni	3/22	text changes, added this grid
Johnni	4/03	Updated main screen. Changed "add storage" to action done in place. Added Copy and attach wizards.
Johnni	4/4/07	Updated screens based on Ian's feedback. Also added more data about "agile" moveable VMs. Added screens for edit and move
Johnni	4/9/07	Removed the references to Agile. Changed the "Copy..." button to "Attach..." Changed the "storage" title in the grid to "Location"
Johnni	4/10/07	Removed "Move" functionality. Removed select "type of storage" step from wizard. Removed initial from size step of storage. Added desc column to SR name in "add" sr wizard. Added desc field to Sr name and VDI name in "attach" wizard. Changes the "location" field to read only. Added a "*" to the field that will require reboot for changes to take effect. Added helper text to indicate that the change won't take effect till reboot.
Johnni	4/11/07	Disk size disabled for editing. Read only flag disabled unless machine is inactive (not running). Add read only tick-box to attach wizard. switch the position of the add and attach button. Added icon to link to contex sensitive help <b>Note</b> - for creating storage to

		need to use good default naming such as 'Local disk on myhost1'
Johnni	4/11/20	<p><b>Final</b> with a couple of tweaks</p> <p>* You've removed the disk size from the settings pane altogether. I'd leave it there even though it isn't editable. The reason is that we're likely to want to display other size related stuff. E.g. the guest agent reports the amount of storage space it sees used in the guest file system. We might want to display that as "Guest reports 5GB file system, 75% used". Further, for thin provisioned disks we might want to display the "actual disk usage", and possibly allow the "warn" and "limit" parameters to be adjusted.</p> <p>* with no disk selected, should the settings pane be greyed out entirely</p>
Johnni	5/4/07	Need to make changes to change last tab to log (now history) and also add virtualization info in heading

What can a user do with storage?

A user can interact with storage on a Pool level, on a Host level and on a VM level.

This document outlines storage on the VM level.

Many of the actions are actually actions on VDI's stored on some storage repository.

But from a user perspective I have a VM, and I want to add (edit, attach, etc.) storage to that VM.

Actions that user will want to take in regards to storage on a VM:

Add - A user can add a new blank disk

Attach (existing VDIx stored on SRx) May already be attached to another VM.

Delete (make it go away entirely)

Detach (from this VM)

Edit (change settings)

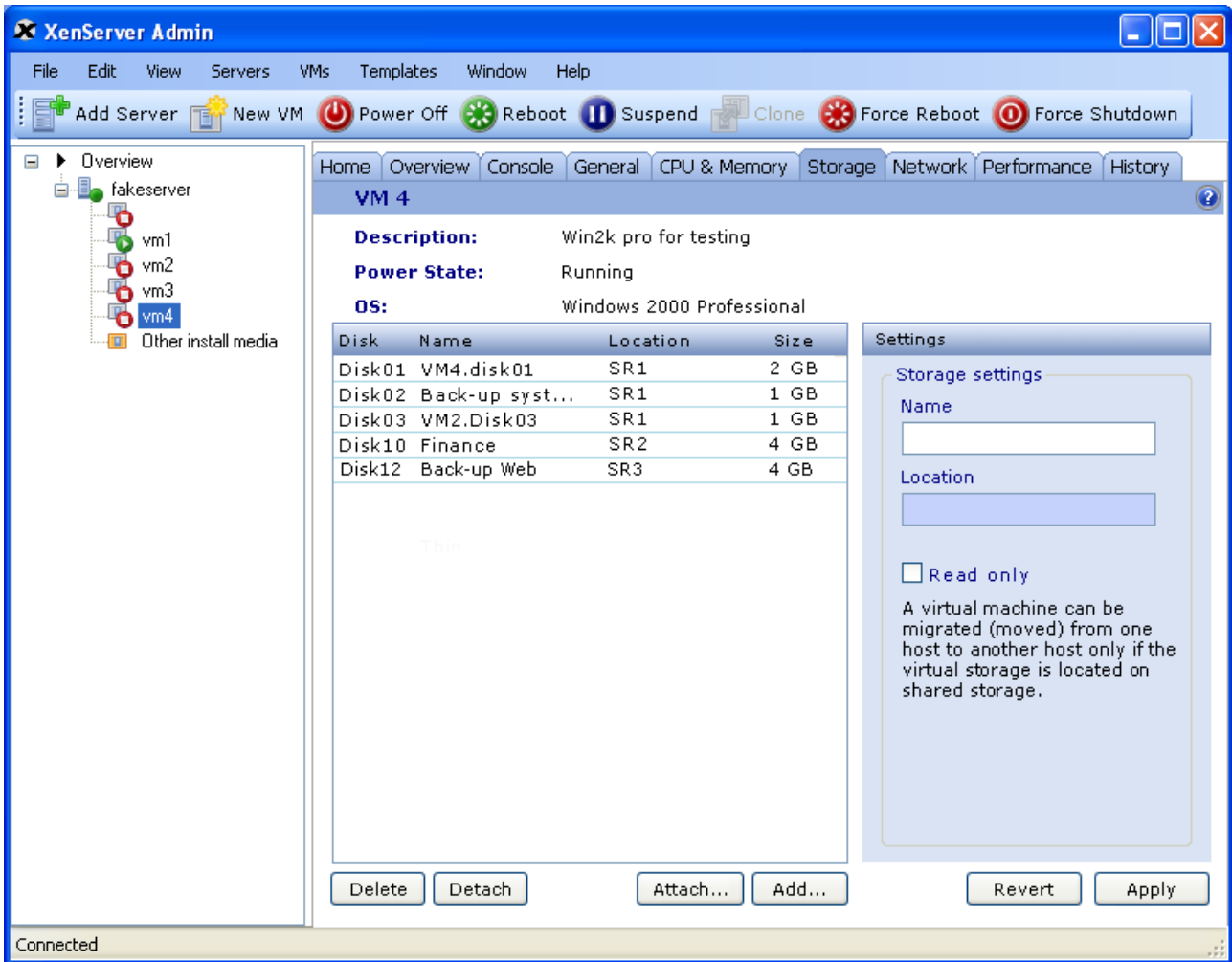
*Move (move VDI from SRa to SRb) (TBD for Rio)*

*Copy (existing VDIx stored on SRx) (TBD for Rio) not included here*

*Snapshot (TBD, not included here)*

In the C# GUI the user will select a VM from the tree control, in this case VM4.

To take actions or view storage the user will navigate to the storage tab in the right, main pane of the window.



Note: this example is incorrect, If there were nothing selected in the grid some of the buttons would be disabled:

Disabled, when nothing is selected

Delete

Detach

Revert

Apply

Enabled, when nothing is selected

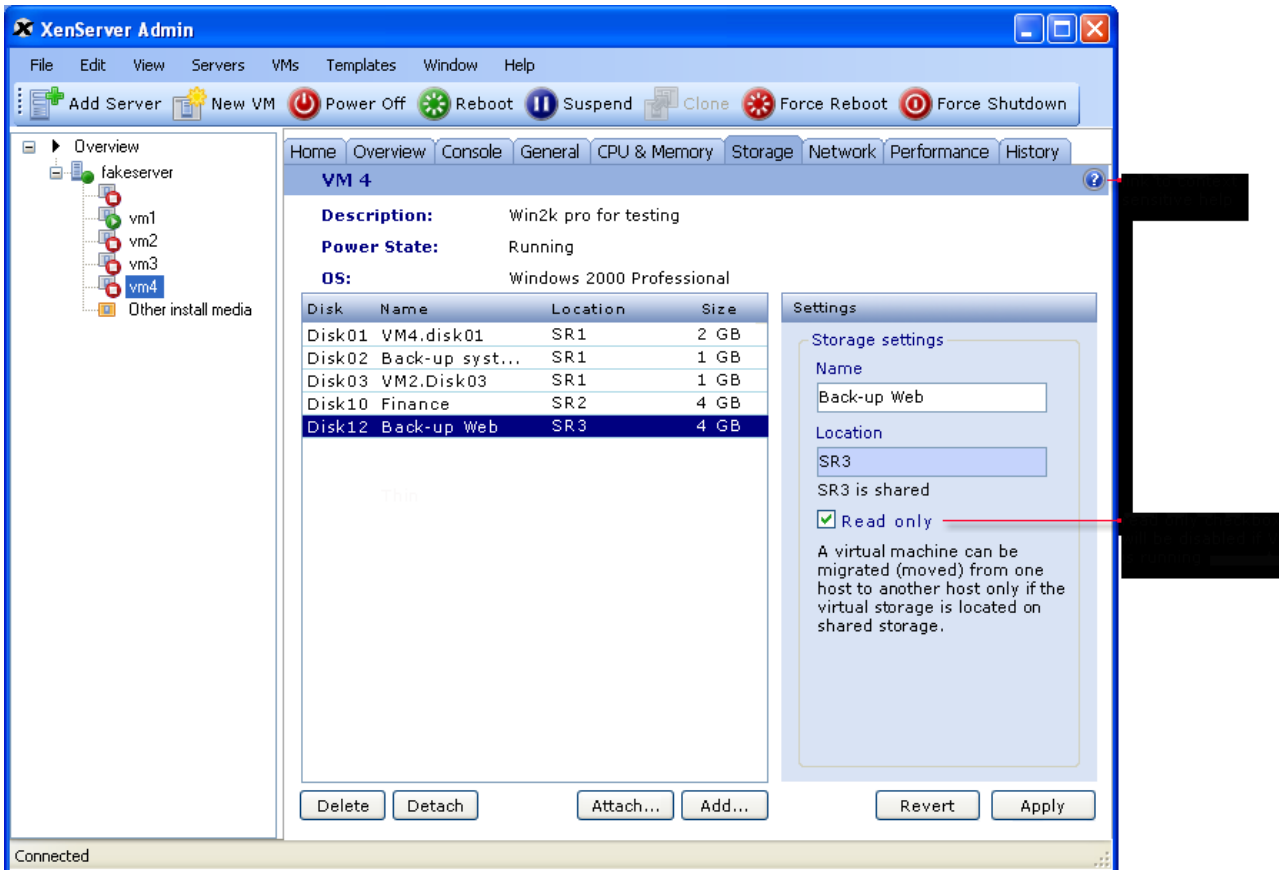
Attach...

Add...

The user **selects the virtual disk form the grid** that they want to take action upon.

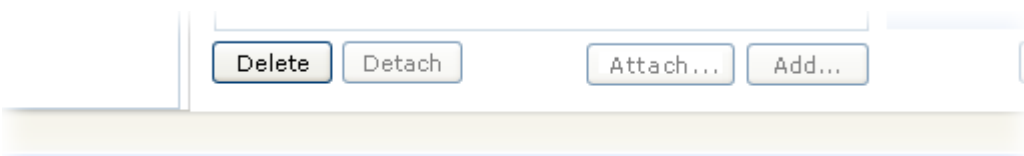
In this case it is Disk12 (1)<see below>

Note that the setting for Disk12 populate the setting panel on the far right (2) <see below>



## User Actions

**Delete** - as seen above some virtual storage is selected in the grid, the user can then select the "Delete" button.



The user is presented with a warning dialog, "Are you sure you want to delete the selected virtual storage? This will permanently remove the virtual storage from your system.

This process cannot be undone

(Ok) (Cancel)"

If the user selects Ok, the VM is deleted. If the user selects Cancel the VM remains as it is. (the button will disable if nothing is selected in the grid)

**Detach** - detaches virtual disk from this VM (button will disable if nothing is selected in the grid) The virtual machine (now VDI) is still available, and stored on the current SR.

## Add -

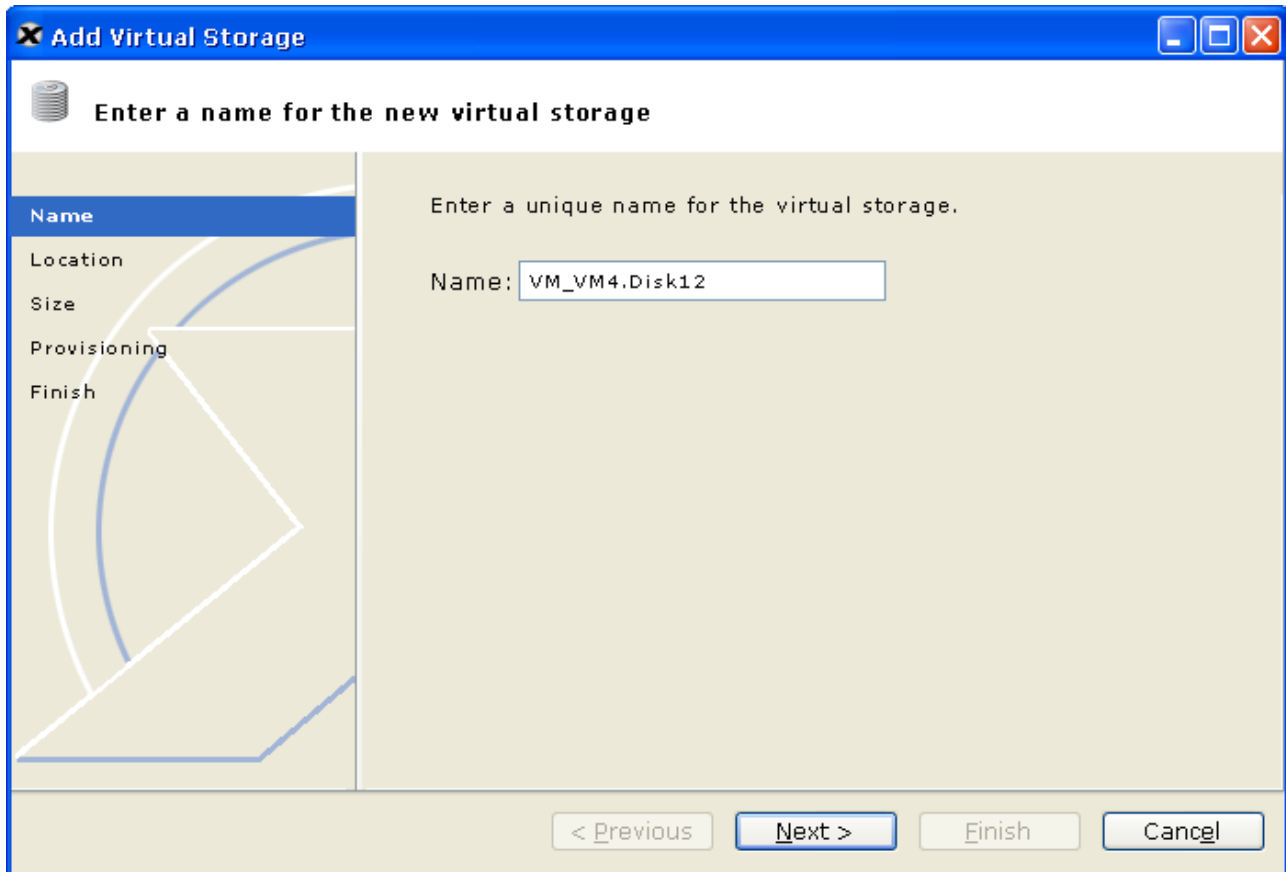
Virtual Storage with the ability to choose whether the storage will be agile (stored on a shared SR) If the

VM is Agile, it will

allow the user to move the virtual storage from one "shared" SR, to another.

**Add Storage - Screen 1** (Storage type built into to wizards, seems important when adding storage to tell user that VM migration

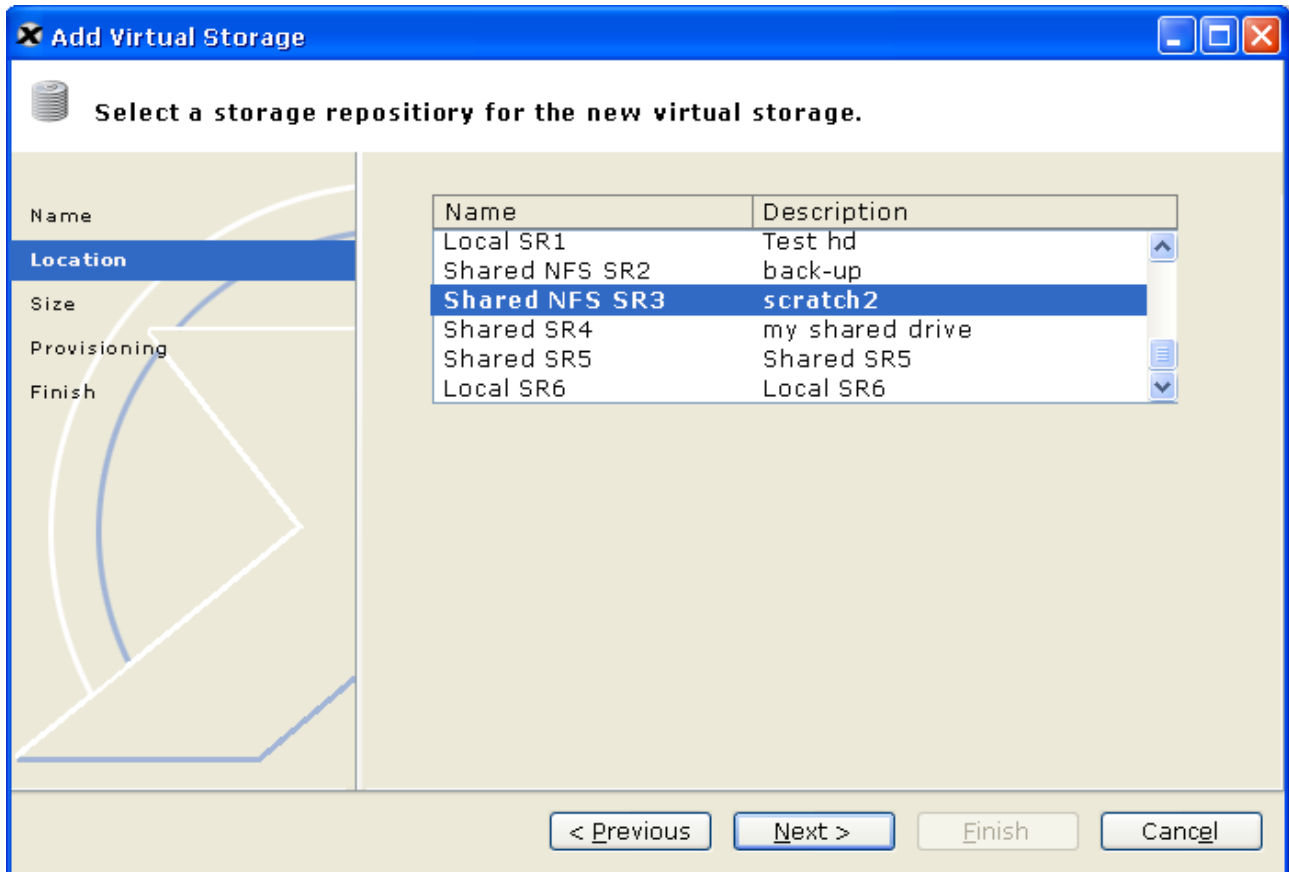
can not be done with virtual storage created on an SR that is not created on an SR that is not shared)



The GUI will supply a default name for the storage. The default name will be "vm\_name.disk\_number."

**Add Storage - Screen 2** The list of available SR's will display in the list box, If the list is long there will be scroll bars to enable scrolling.

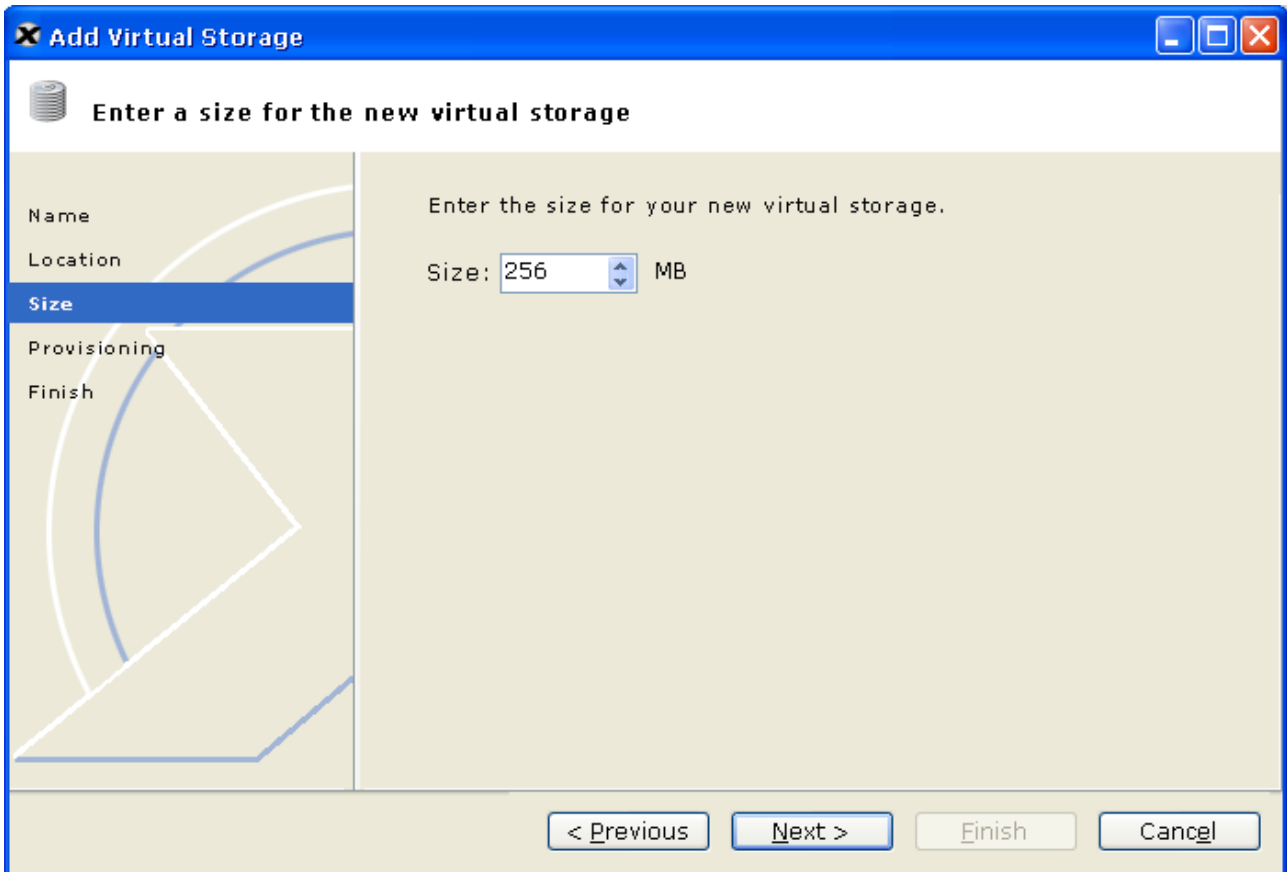
**Note** - If there is only one SR, this screen **will not appear in the wizard...**



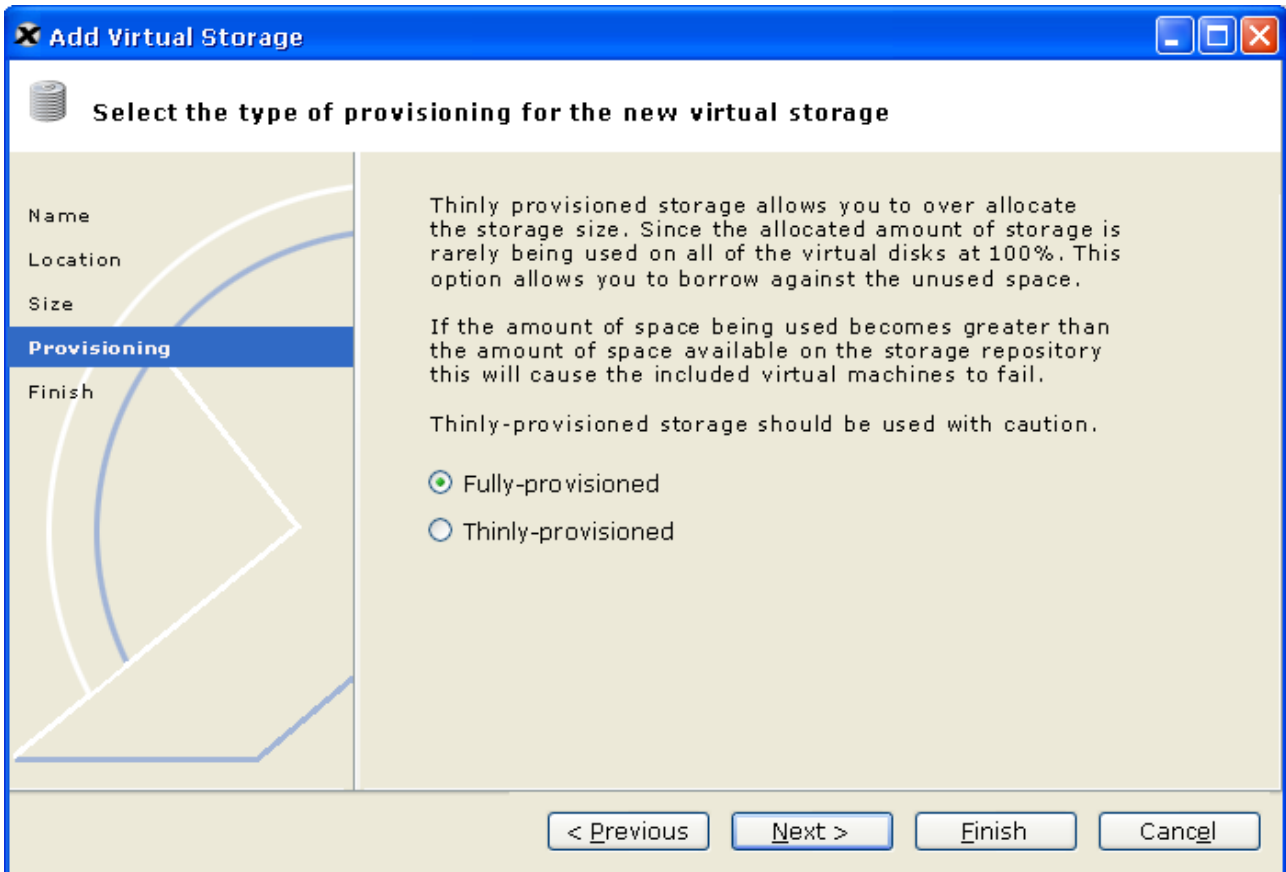
**Default** - Let's note in the storyboard that the default comes from a persistent 'last selected SR'. For Rio, let's have a single default that is common across all GUIs connecting to a host/pool. Exact semantics unimportant.

**Note** - If there is only one SR, this screen **will not appear in the wizard...**

**Add Storage - Screen 3** The user can manually enter the storage amount or the can use the spinner control to change the size.



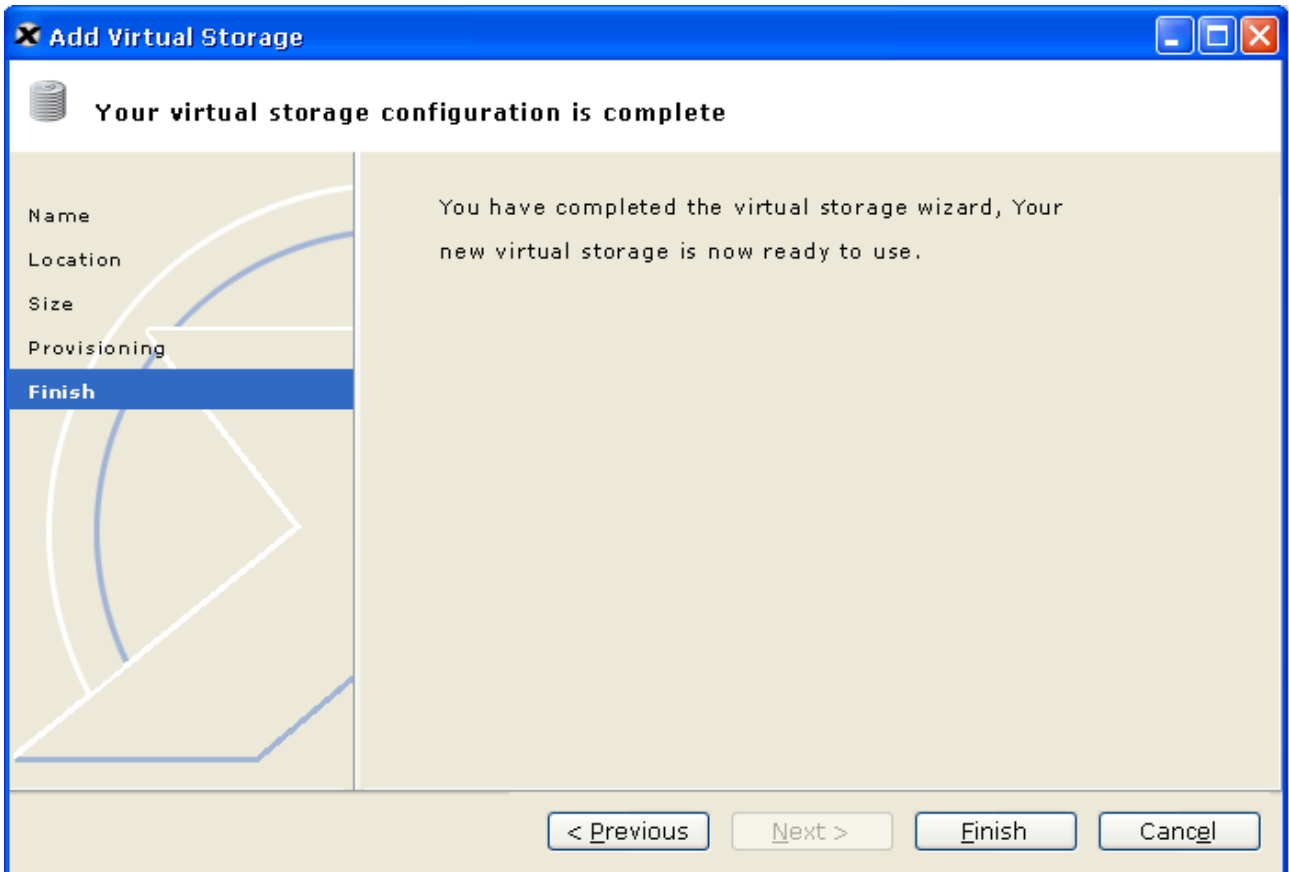
**Add Storage - Screen 4** This screen will allow the user to select the storage to be fully-provisioned or thinly-provisioned.  
The text on this screen is not final and is just intended as a place holder for the final text, once everyone gets a chance to review the screen, and possibly give feedback on the text.



Note the "Finish" button is enabled here so that user may skip the finish screen.

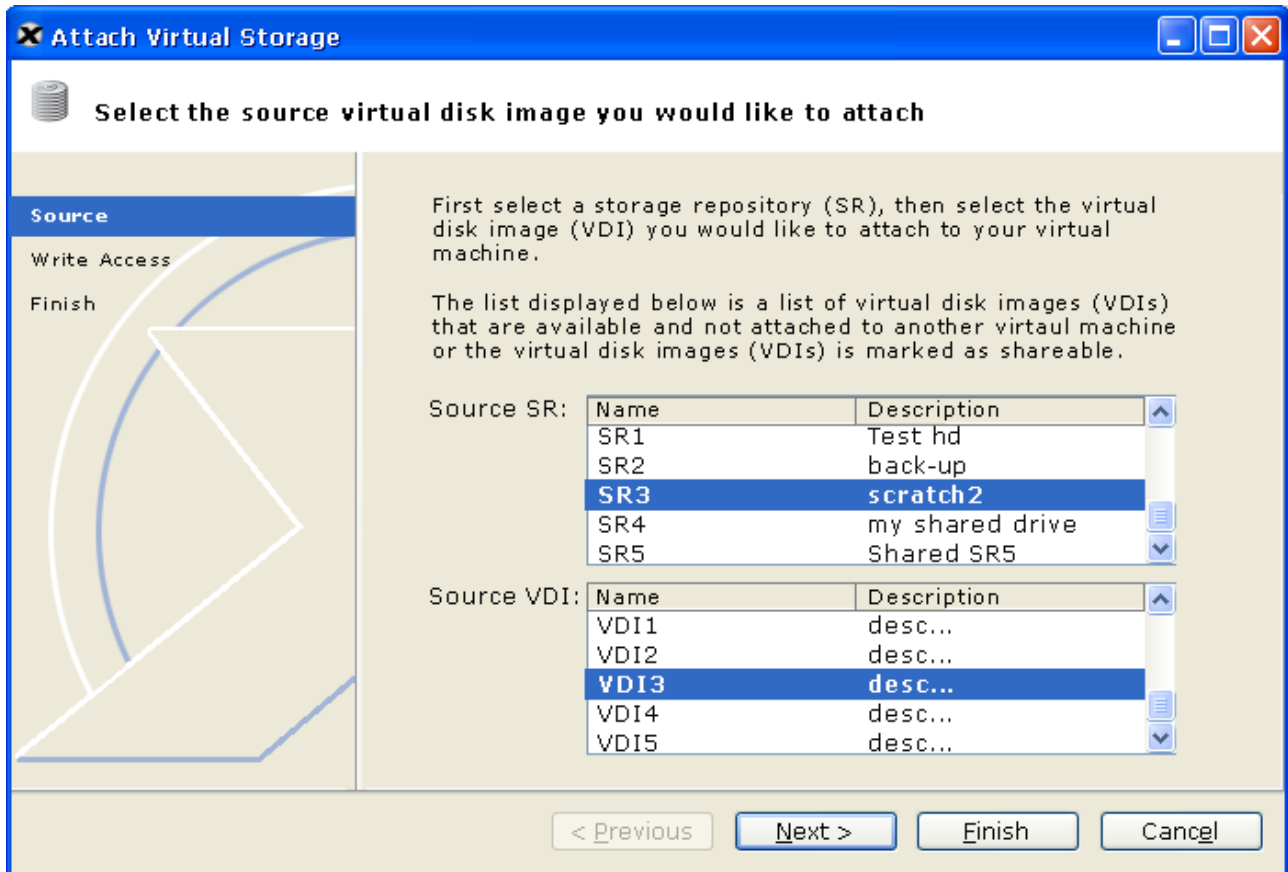
**Add Storage - Screen 5** The finish screen. it should give the user an overview of what they have accomplished while stepping through the wizard. It also gives them one more opportunity to cancel out of the operation.



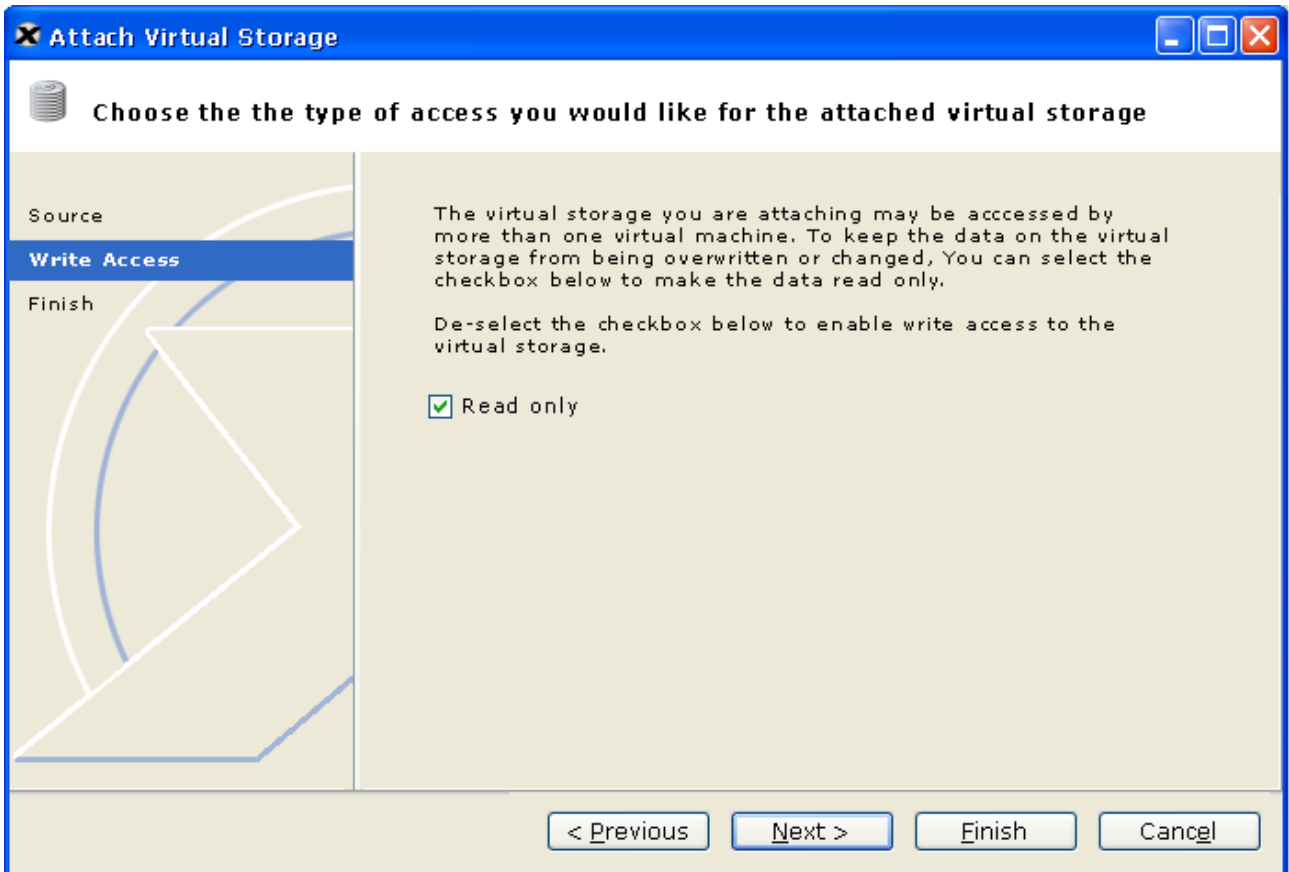


**Attach-**

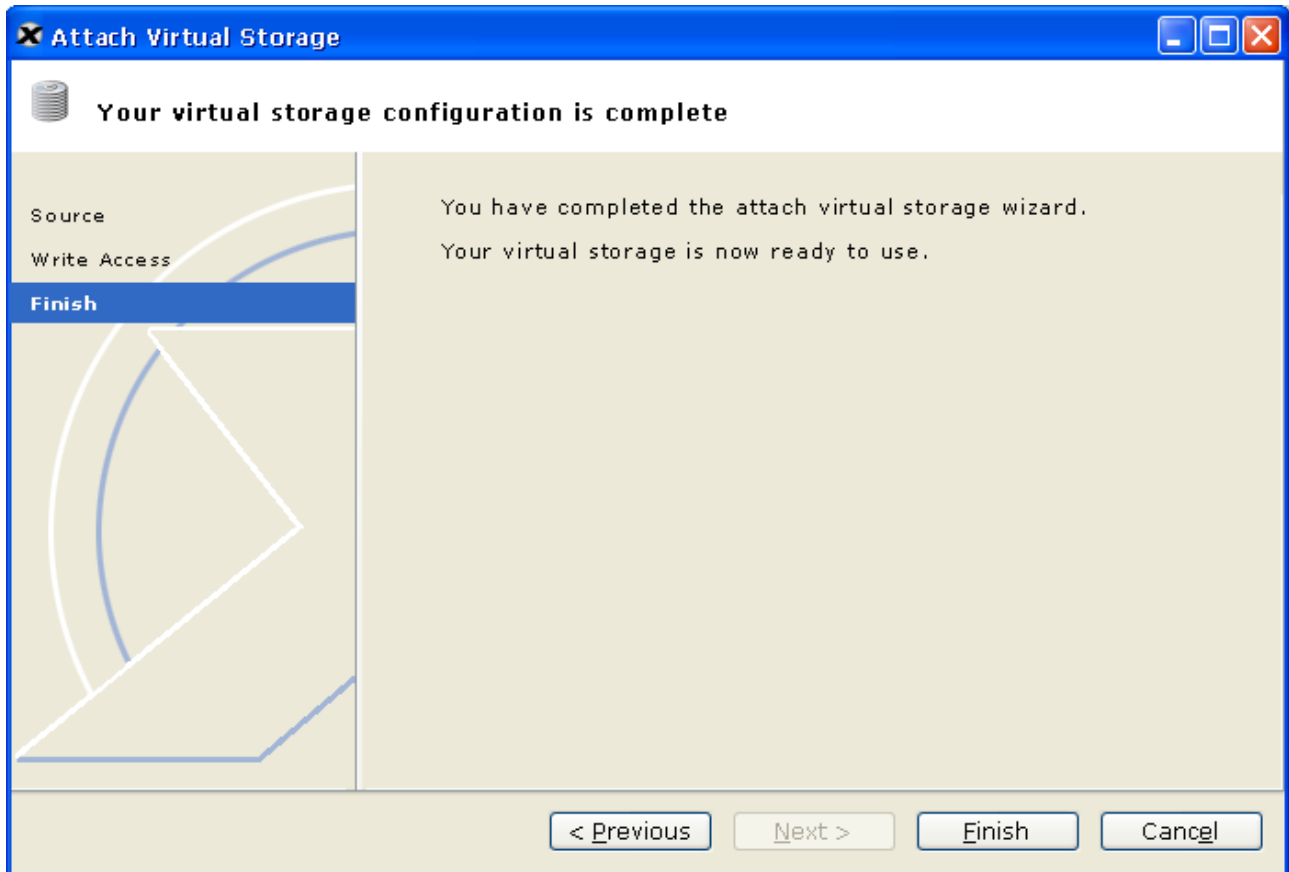
**Attach Storage - Screen 1** The user will select the source virtual disk image to attach on screen 1.



**Attach Storage - Screen 2** - The default is read only



**Attach Storage** - \*Finish screen\*



**Edit** - The user would select the VM from the tree control(1) and the storage tab from the main pane. The user would then select some storage from the grid that they would view then possibly edit the settings.

In the far right pane the setting would populate the form (3) and the user could edit the name, and read only status (if the machine is inactive).

To save the settings the user would click "apply" (4).

To revert to the old settings, in case of a mistake, the user could click the revert button (5), and the settings would return to the initial state.

