

XenServer Applications Group : Server view-Storage - Add, Detach, Edit

This page last changed on Nov 10, 2009 by emellor.

Revision History Who	When	What
Johnni	4/11/07	Created document shell. More questions than data.
Johnni	4/23/07	All host storage is shared - removed delete - allow editing of name and desc only cannot change from shared to local. Hard coded iSCSI and NFS and local parameters updated from Andy. Limiting choices to local, NFS, and iSCSI and local. Wizard screens for all 3 have been added. Storyboard for the advanced button from the wizard of NFS and iSCSI still need to be done.
Johnni	5/1/07	updated screen shot of main window. the heading was wrong and did not make sense. Changed it to list the name of the server selected in the tree node (fakeserver) and added a IP address field (172.24.00.00) and also a description field (a useful description)
Johnni	5/3/07	Note to self changes to make, add desc field to all SR types.
Johnni	5/4/07	note to change heading in main page switch desc and IP address, desc should always come first also history tab should read log.
Johnni	5/22/07	Added the text for advanced options to iSCSI and NFS. These options are TBD for RIO. Also - iSCSI vdi-per-lun is still TBD

Storage Repositories. Server view

(also see Storage - Shared storage view of VDI's)

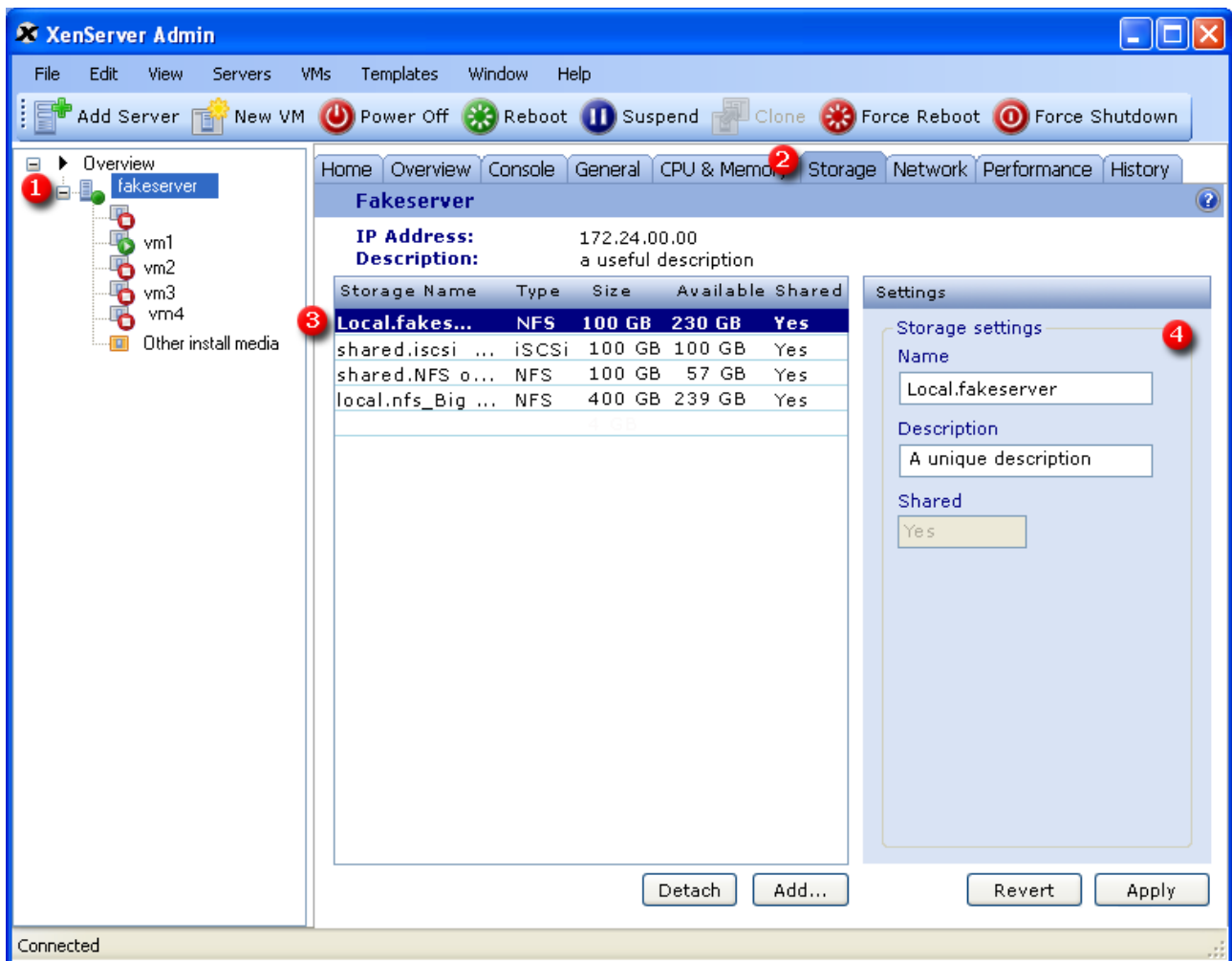
This is a description of what a user can do with storage from the "Host" (Server) level

A user can add, detach, and edit storage.

Editing can only be done for the name and description. Anything else is TBD

Note:

- (1) the host "fakeserver" (node) is selected in tree control.
- (2) The storage tab is selected in the main panel
- (3) The first item in the list is selected local.fakeserver. - - This list is a list of storage for the server
- (4) The properties for it are displayed on the far right. The user can edit name and description.



Showing shared is only to keep similarity between this panel and VM storage. All storage on this level would be shared.

----- > Would all storage on this view be shared?

So the actions the user can do are

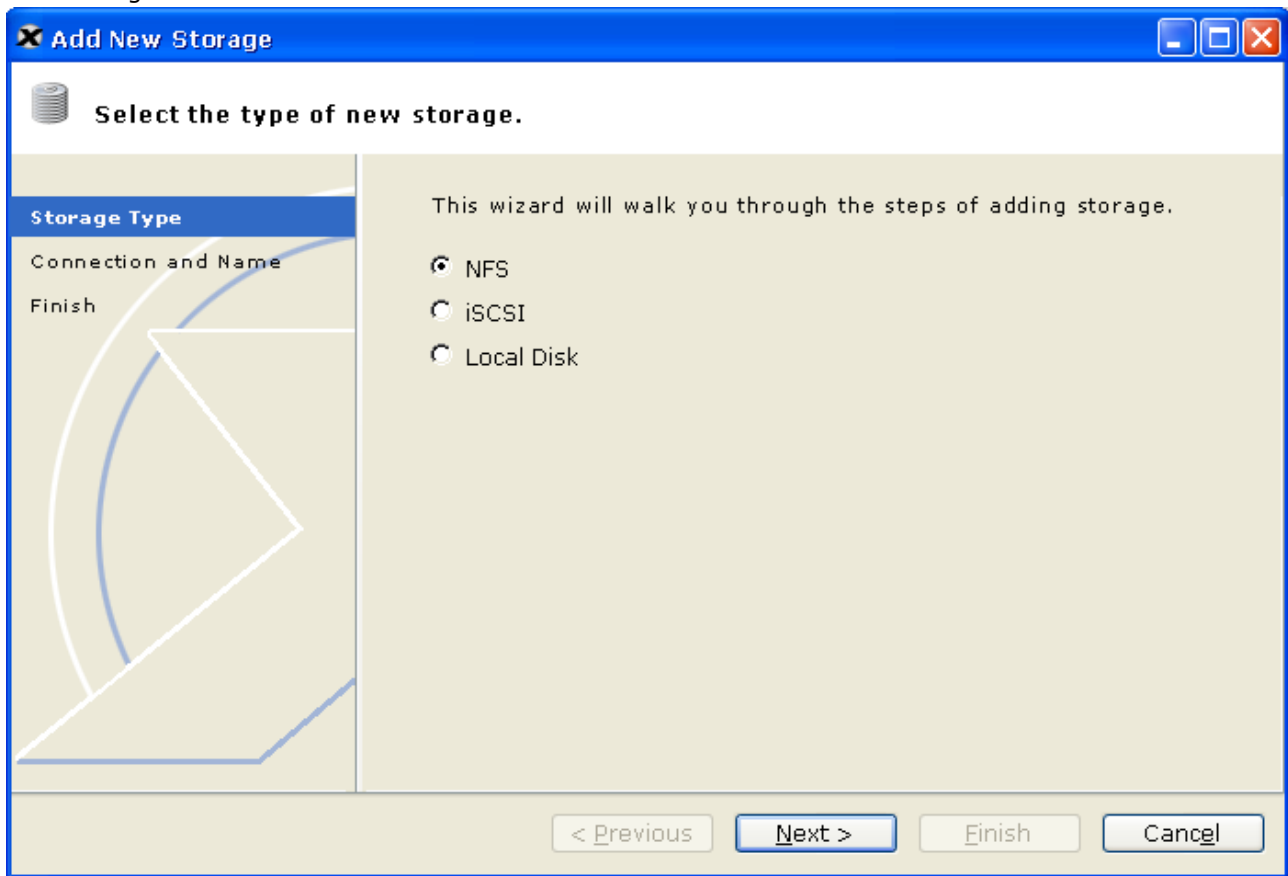
Detach a selected SR (no wizard)

Edit an SR (name and desc only? for now)

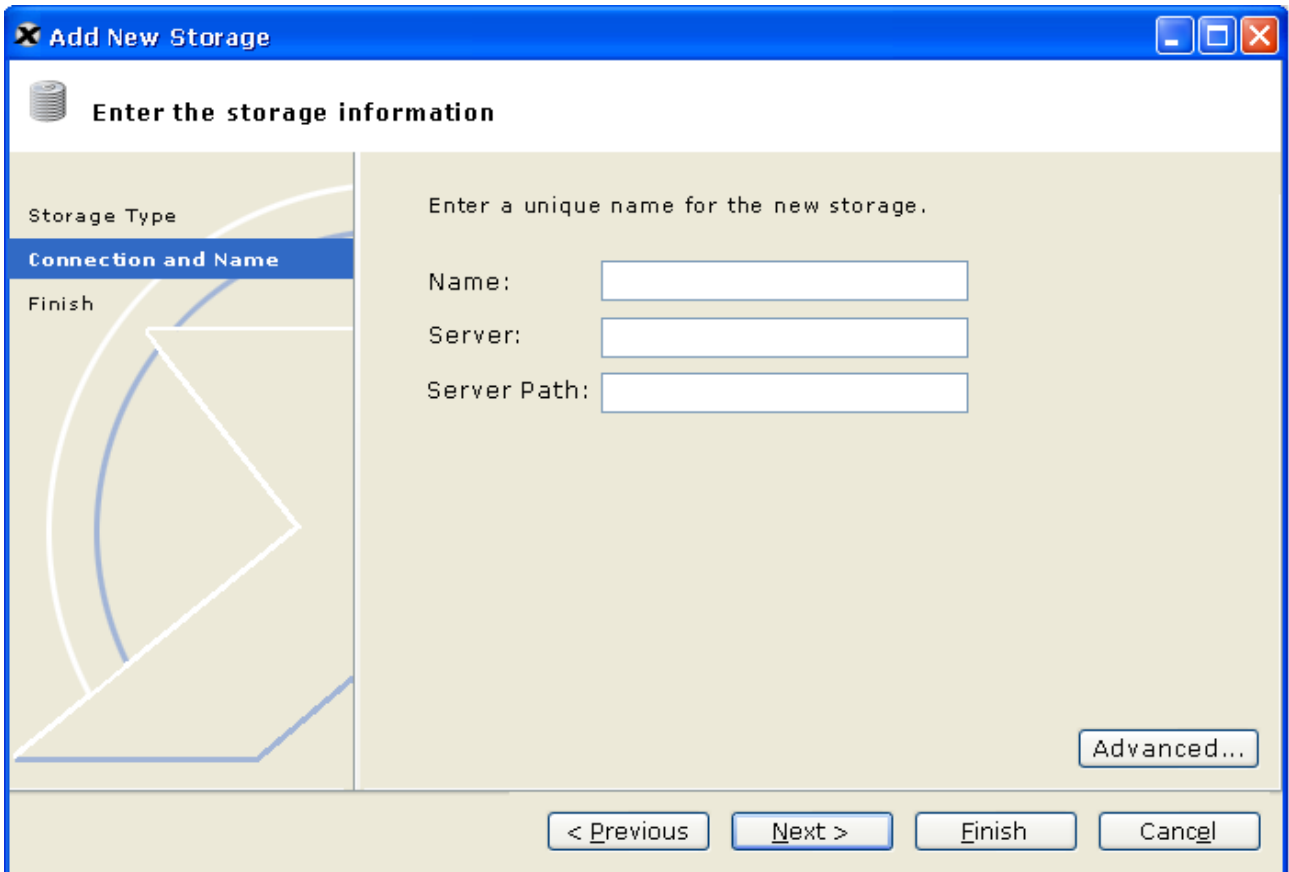
Add an SR using a wizard.

The wizard for adding an SR might go something like this

NFS Storage Screen 1



NFS Storage Screen 2

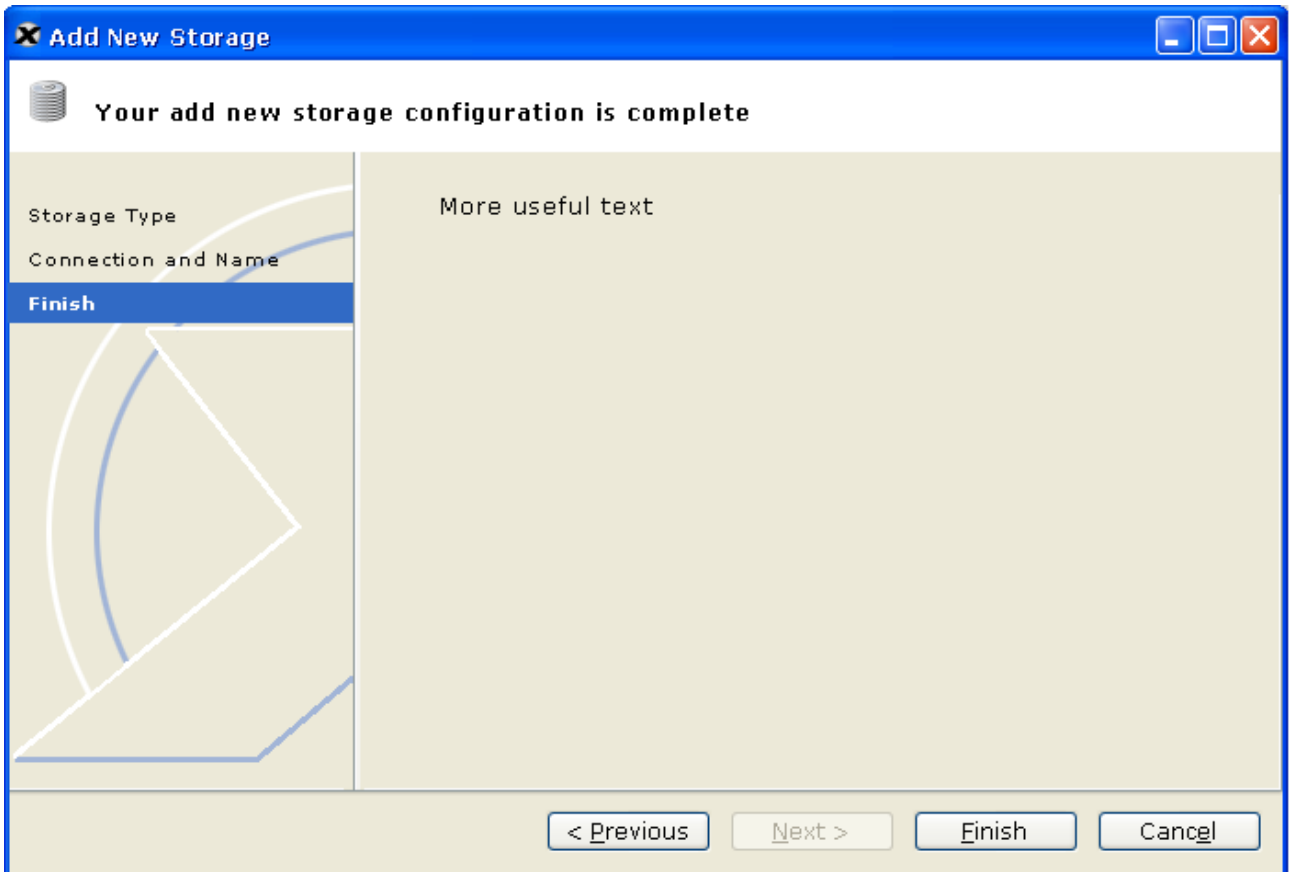


ADVANCED OPTIONS - TBD for Rio

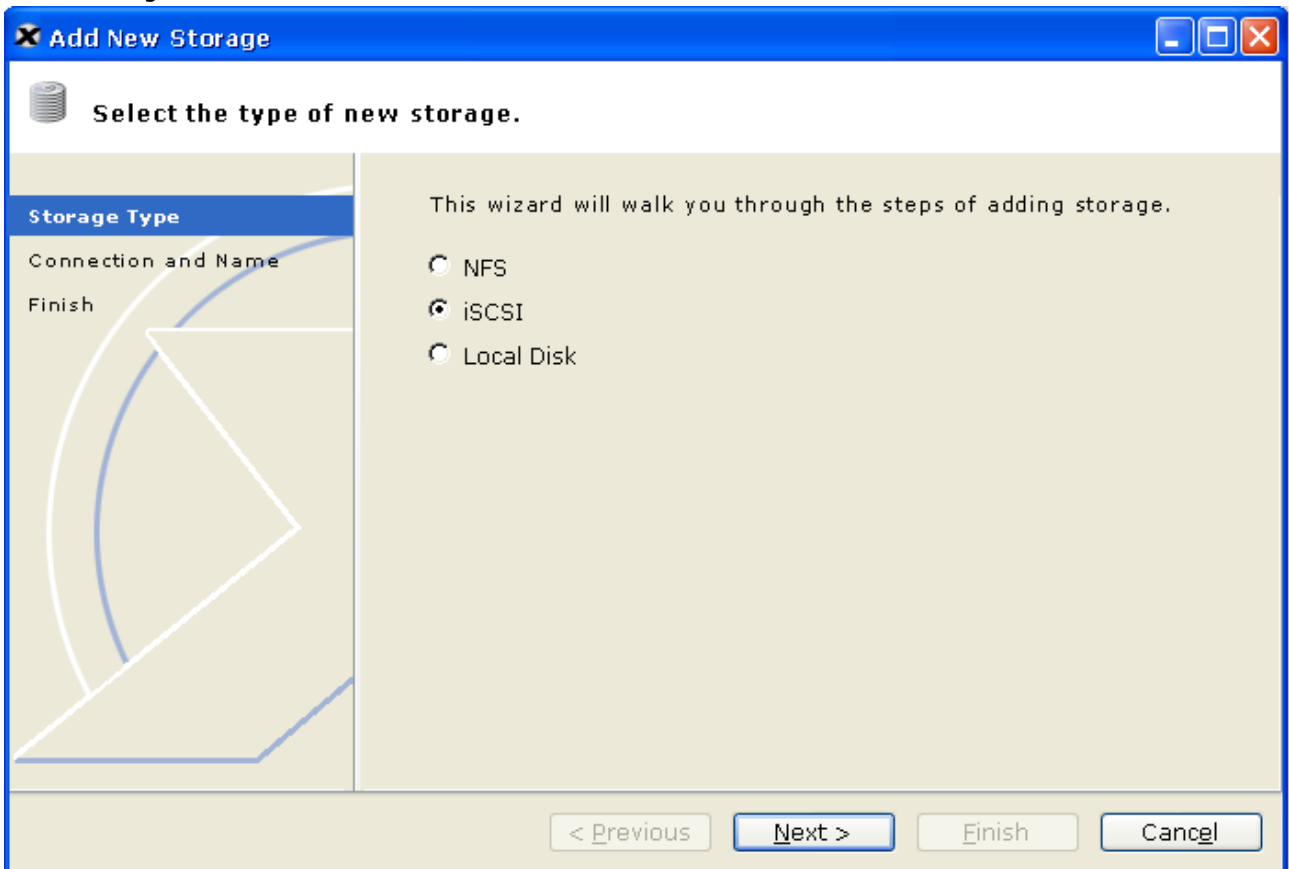
NFS Options

This is a string containing a comma-separated set of options to the NFS client and can be used for tuning.

NFS Storage Screen 3



iSCSI Storage Screen 1



iSCSI storage screen 2

The screenshot shows a window titled "Add New Storage" with a blue title bar. The main area is titled "Enter the storage information" and contains a progress indicator on the left with three steps: "Storage Type", "Connection and Name" (which is highlighted in blue), and "Finish". The main content area has the instruction "Enter a unique name for the new storage." and four input fields: "Name:", "Target Host:" (with the subtext "IP or DNS name"), "Target IQN:" (with the subtext "IQN of target"), and "Local Initiator IQN:" (with the subtext "IQN of host"). At the bottom right of the main area is an "Advanced..." button. At the bottom of the window are four buttons: "< Previous", "Next >", "Finish", and "Cancel".

ADVANCED OPTIONS - TBD for RIO:

CHAP:

Username

authentication username

Password

authentication password (password field)

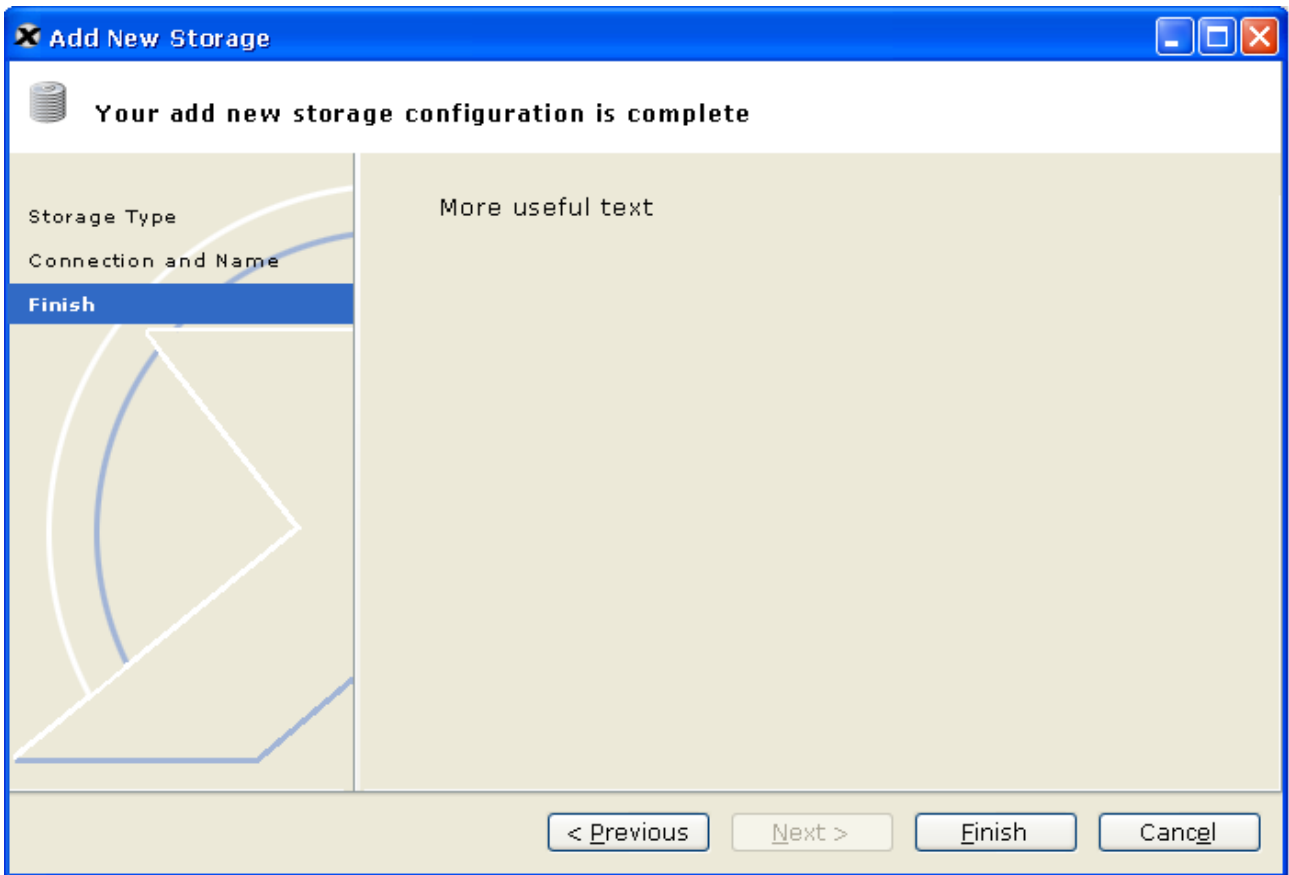
Port

discovery port number

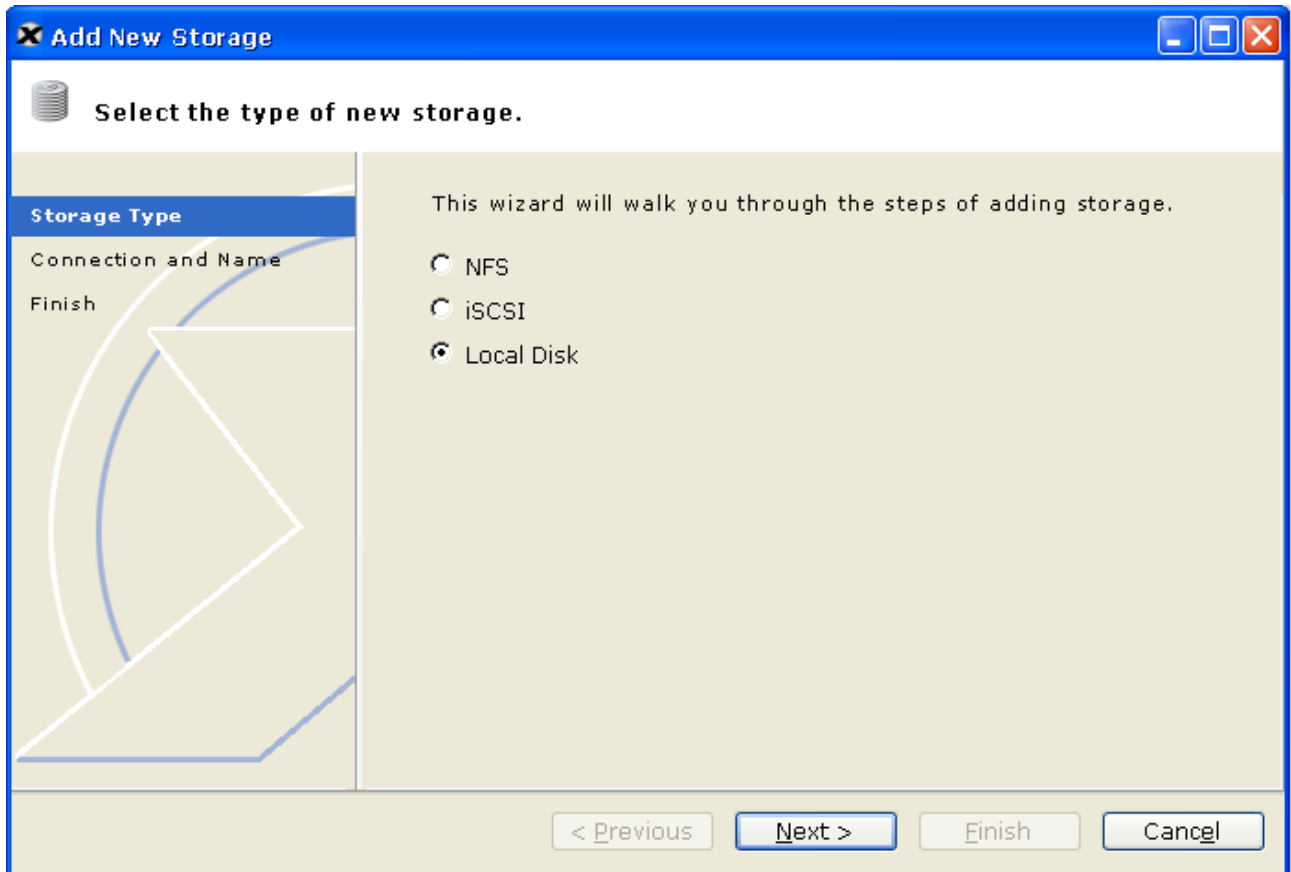
Discovery number to use

This is a hack that will either need fixing or some detailed documentation.

iSCSI Storage Screen 3



Local Storage Screen 1



Local Storage Screen 2

Add New Storage

Enter the storage information

Storage Type

Connection and Name

Finish

Enter a unique name for the new storage.

Name:

SR Device Name:

< Previous Next > Finish Cancel

Local Storage Screen 3

