

Engineering Projects : Tab Order - Access keys - Wizards

This page last changed on Jul 05, 2007 by jaguirre.

Revision history Who	What	When
Johnni	Created document	7/6/2007

This page will cover keyboard navigation including access keys for the wizards in Rio.

Access keys are still TBD.

This page does not cover input validation.

Tab order in wizards basics:

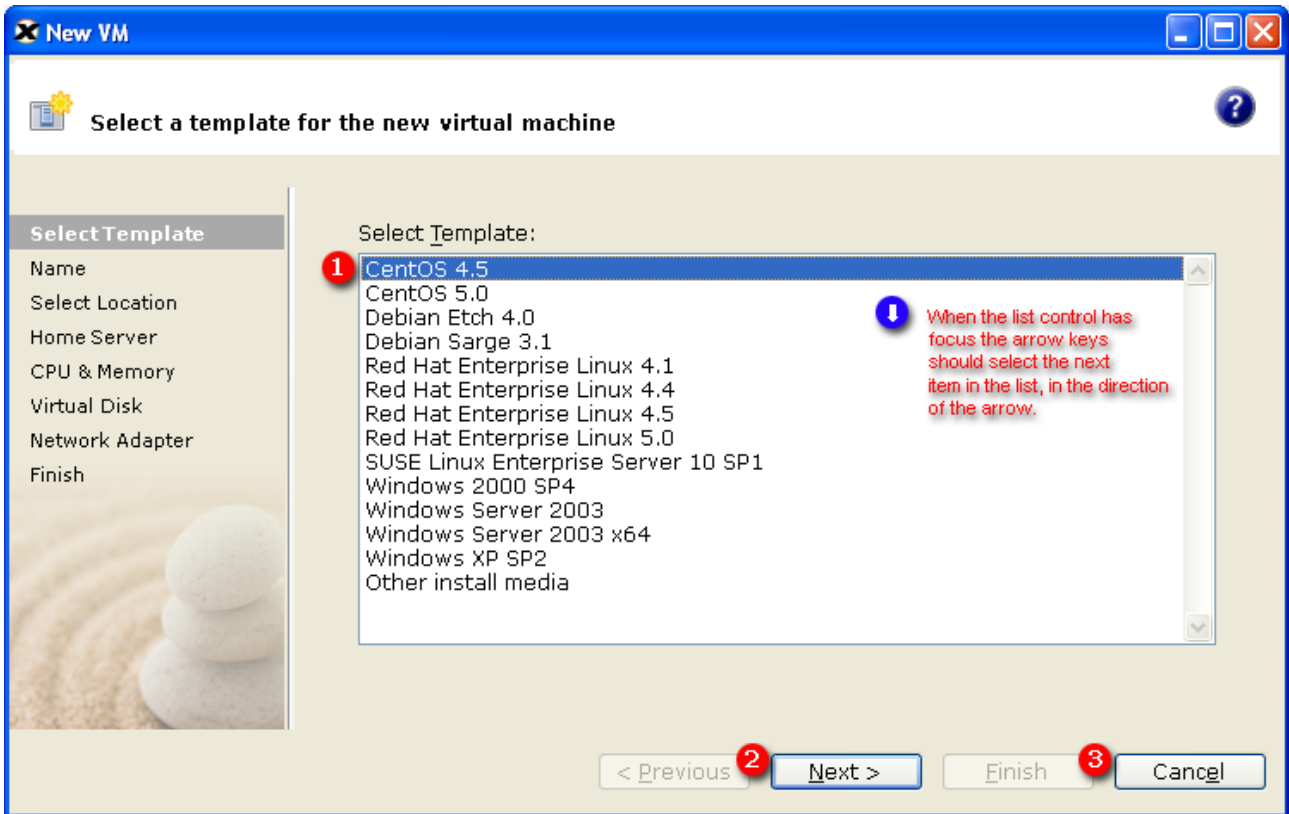
- Tab and Tab+Shift move between the next and previous controls of the window (not just the navigation controls at the bottom), respectively.
- Set the order for the tabbing (for western countries), left-to-right and top-to-bottom. Beginning at the top right.
- Navigating to a textual label for a control should put input focus in-side that control, such as a list box.
- When using the tab key to navigate to an textual control (alpha or numerical control), if the control has a default text or number in the control, tabbing to the control will "select" (highlight) all of the characters in that control.
- Grouped controls, such as radio buttons, the tab key is used for moving the input focus to the current "set choice" in the group, and use the arrow key to move between individual options.
- The arrow key will navigate between choices in groups, such as radio buttons, list boxes and dropdown menus.
- In a numeric spin control the up and down arrow keys will increase or decrease the value of the number in the control.
- The "enter" key will access the next button, except in the last screen of the wizard where it will access the finish button.
- The "Esc" key will exit the wizard.

Tab order

The number 1 will have focus when you enter the page. Focus will loop through the numbers sequentially and repeat.

New VM wizard

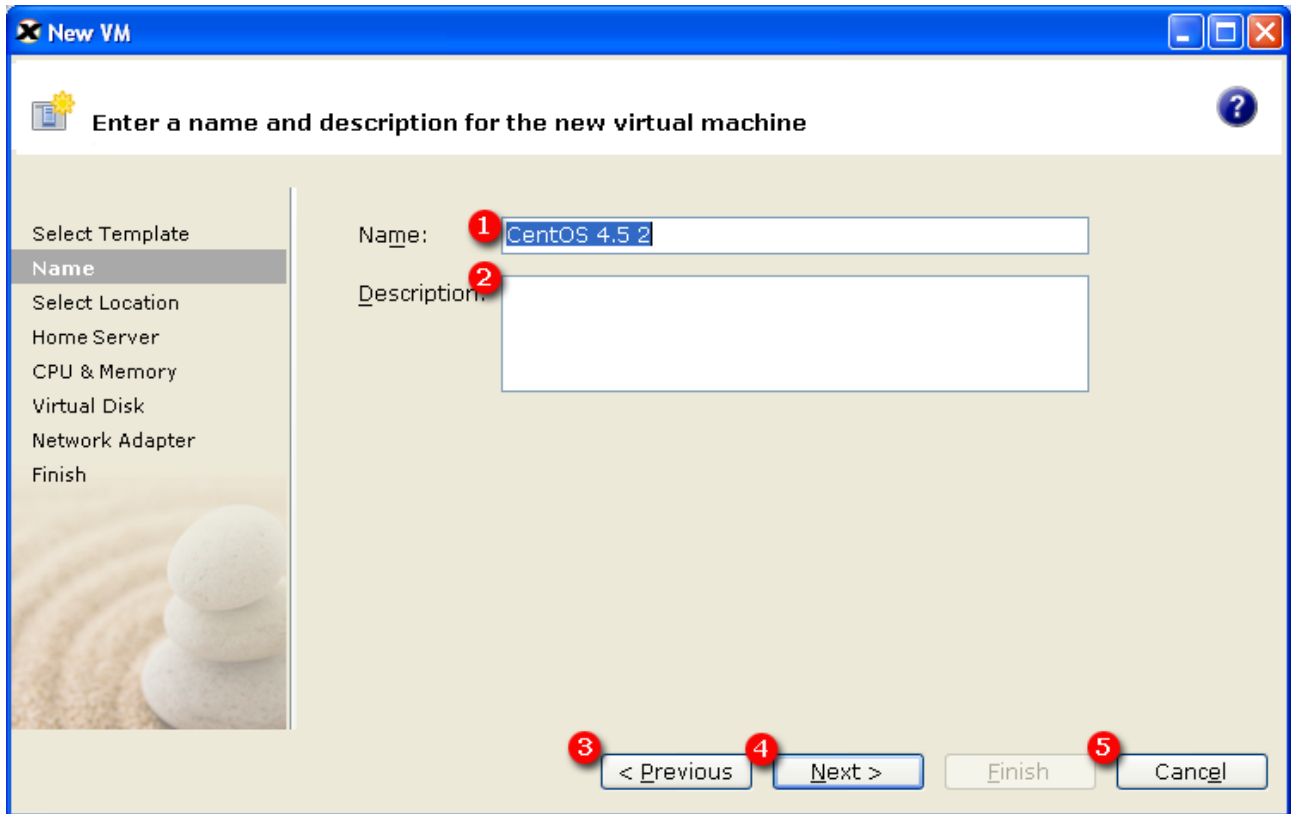
Screen 1 select template



Accelerator key(s)

Select Template = T

Screen 2 - Name

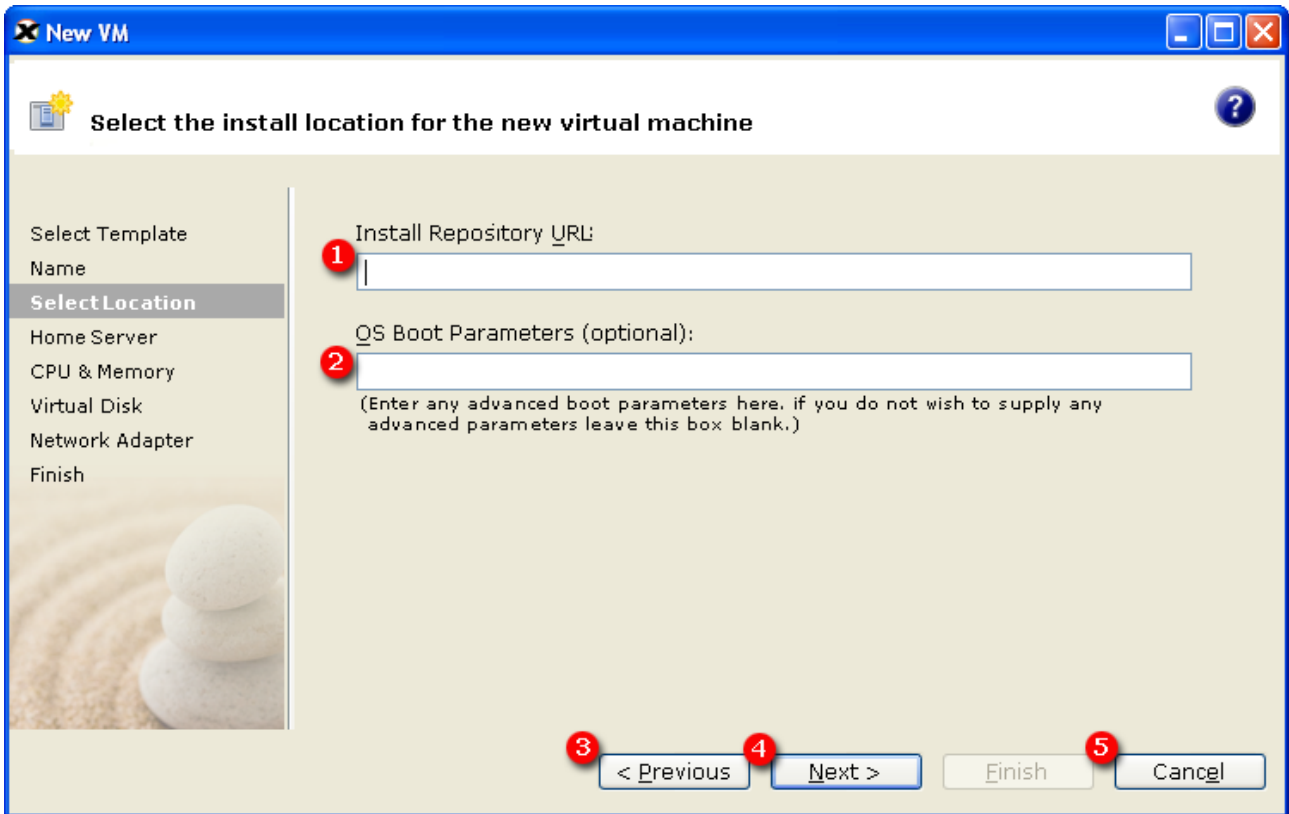


Accelerator key(s)

Name = M

Description = D

Screen 3 - Select Location

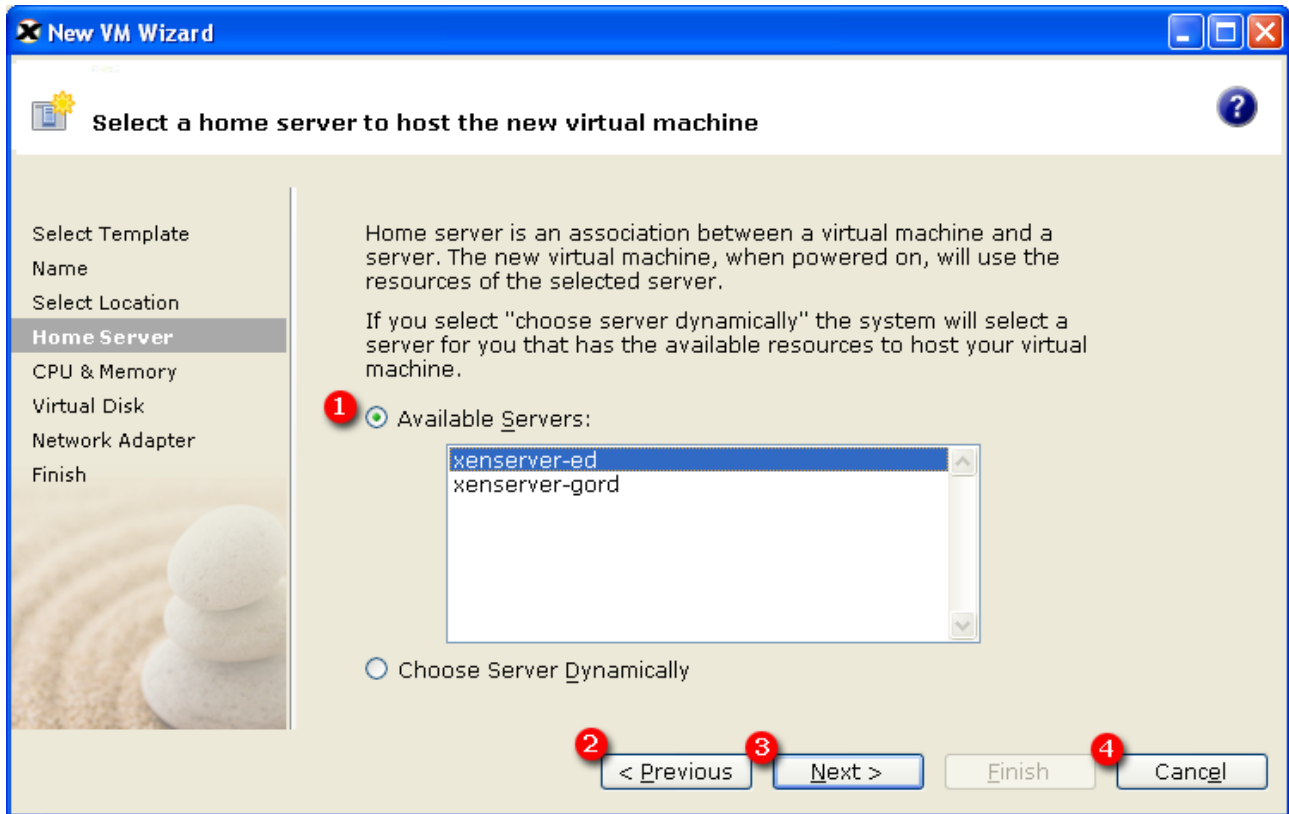


Accelerator key(s)

Install Repository URL = U

OS Boot Parameters = O

Screen 4 - Home Server

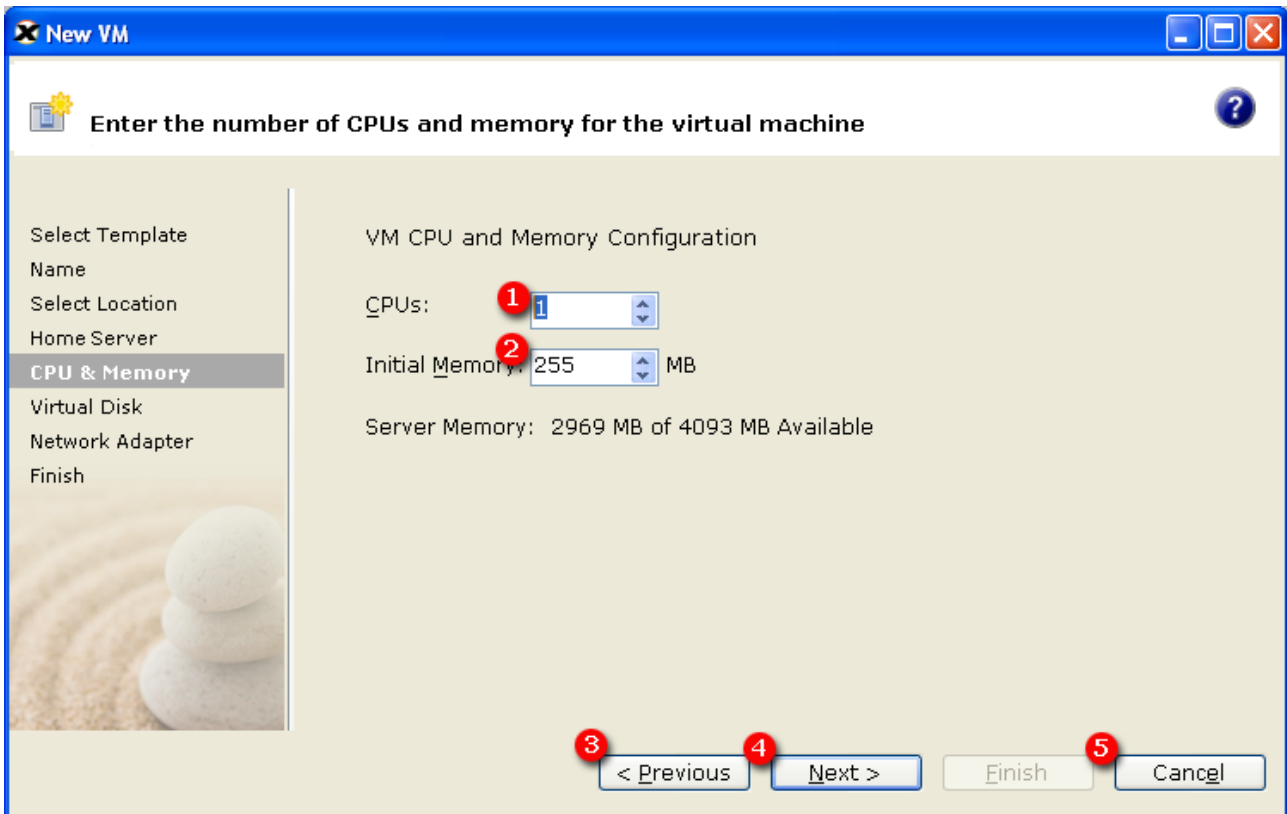


Accelerator key(s)

Available Servers = A

Choose Server Dynamically = D

Screen 5 - CPU & Memory



Accelerator key(s)

CPUs = C
Initial Memory = M

Screen 6 - Virtual Disk!to_newvm_06.png!

Accelerator key(s)

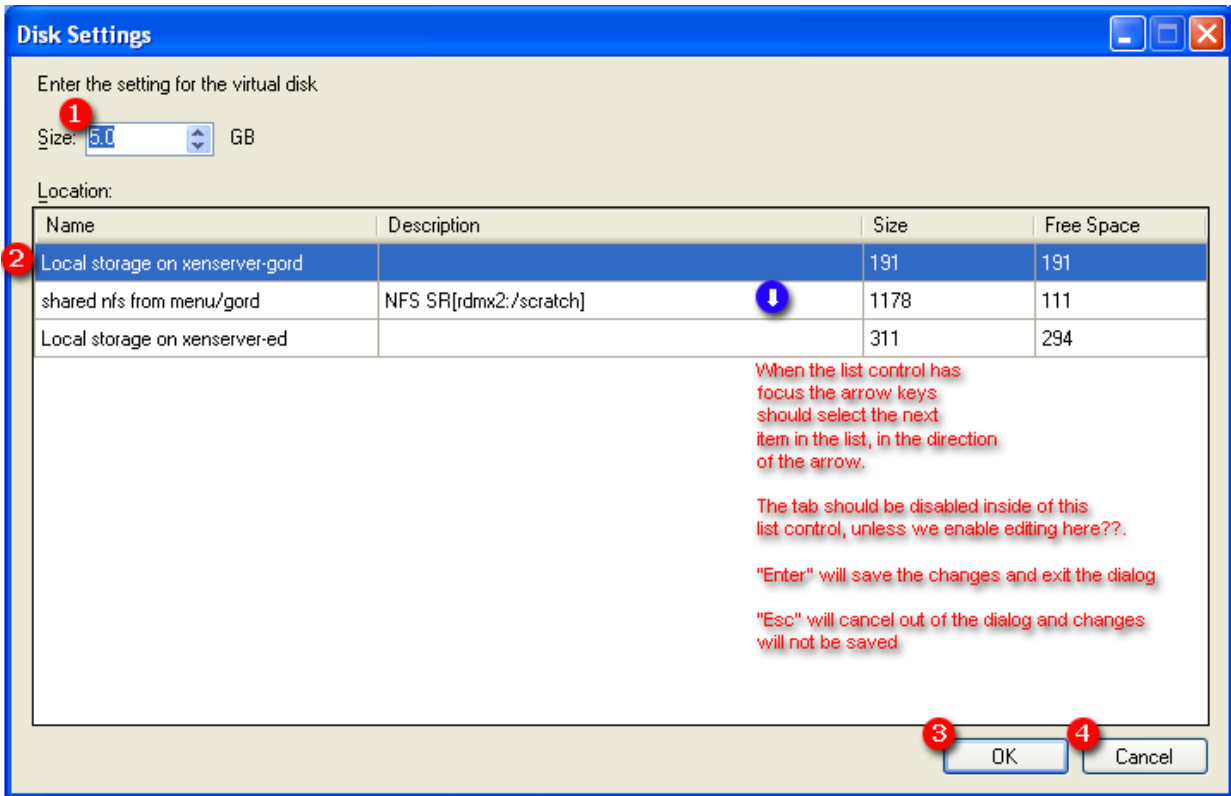
Device = D
Add = A
Edit = E

Screen 6 - Virtual Disks - with delete button enabled!to_newvm_06_delete.png!

Accelerator key(s)

Device = D
Add = A
Edit = E
Delete = T

Screen 6 - Disk Settings pop-up

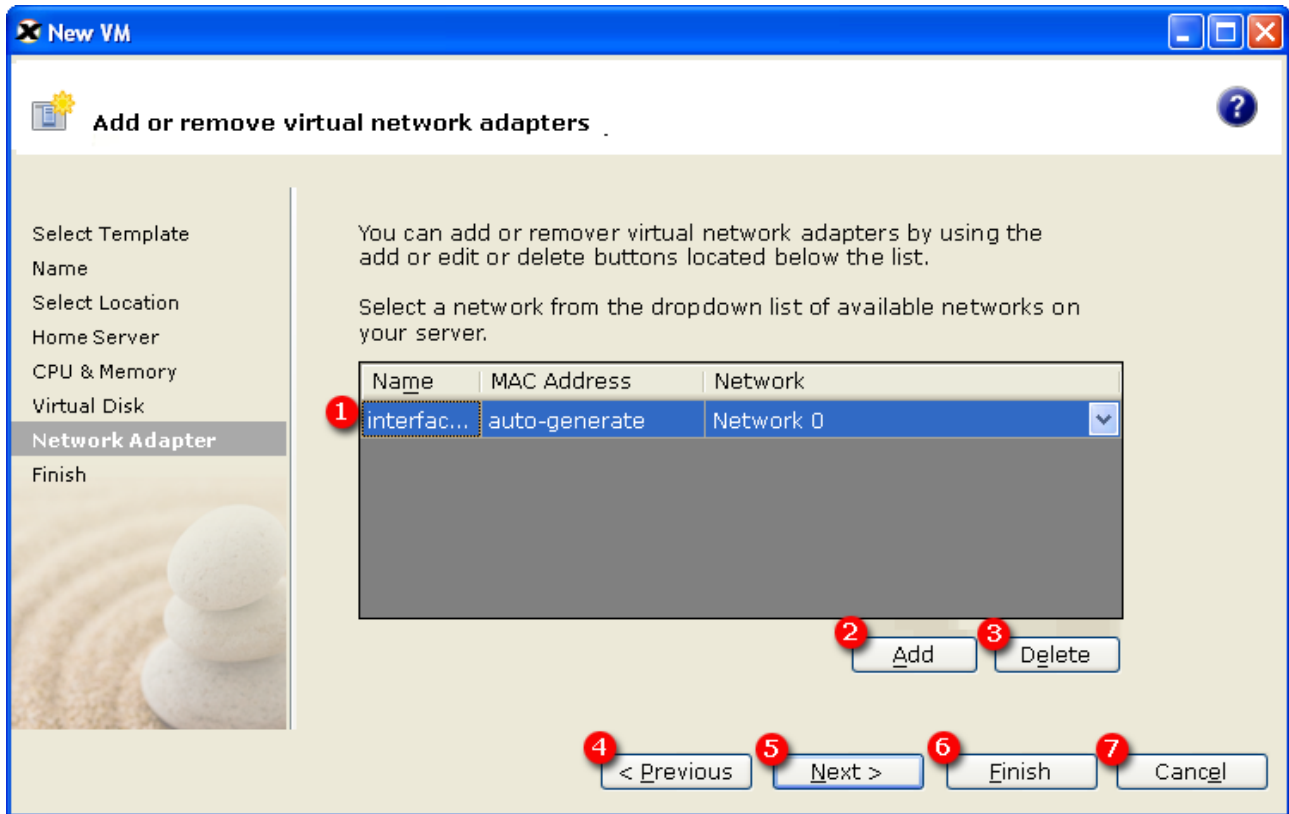


Accelerator key(s)

Size = S

Location = L

Screen 7 - Network Adapter



Accelerator key(s)

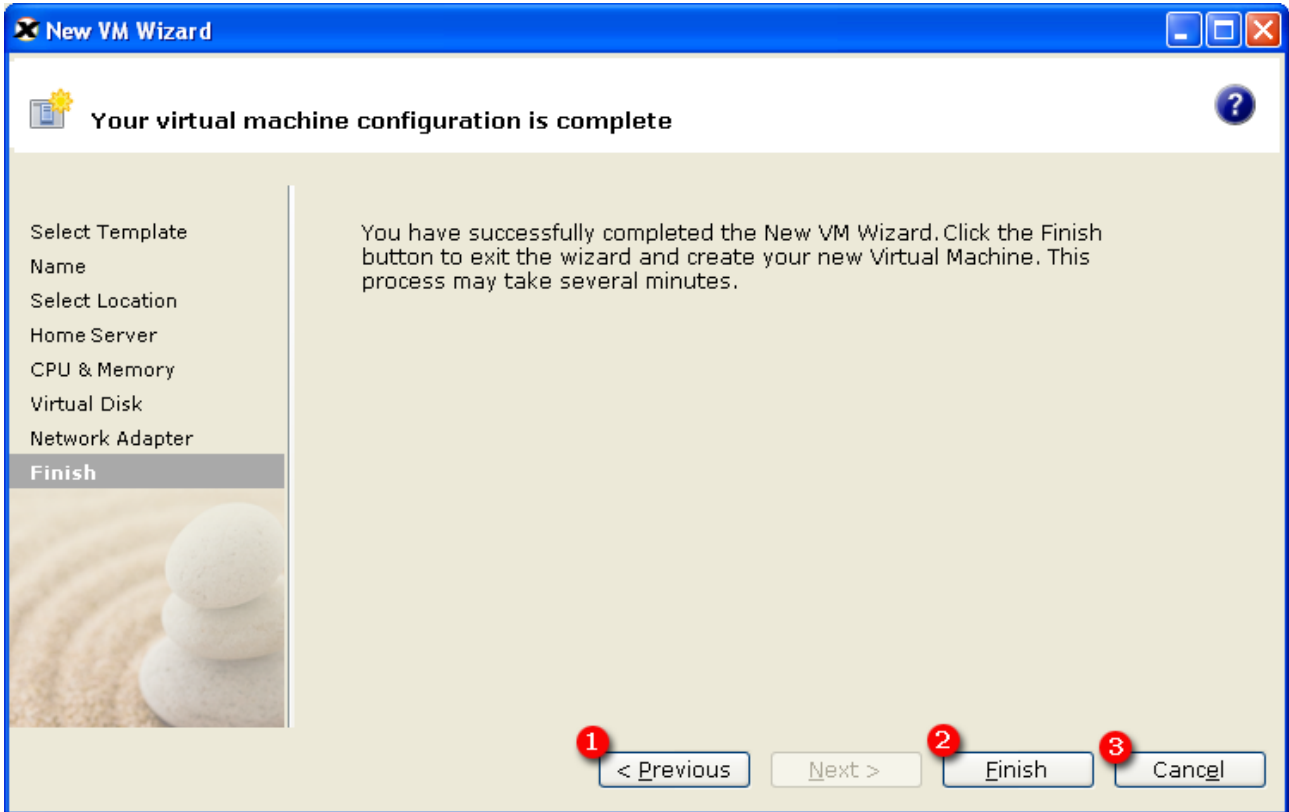
Name = M

Add = A

Delete = E

Note: enable finish button on this screen so that users can skip the last step

Screen 8 - Finish



Note: hitting enter will save the process and close the window