

Engineering Projects : Wizards Specs

This page last changed on Jun 14, 2007 by jaguirre.

history Who	When	What
Johnni	4/16/07	Created document
Johnni	6/6/07	The rock image should replace the dreaded X in the left pane. The .png image is included further down in this file

Wizard specifications

The wizard UI is based on the Microsoft windows standards for Wizards. It is a bit of a hybrid between the XP standards and the newer vista standards.

Vista Standards

<http://msdn.microsoft.com/library/default.asp?url=/library/en-us/UxGuide/UXGuide/Windows/Wizards/Wizards.asp>

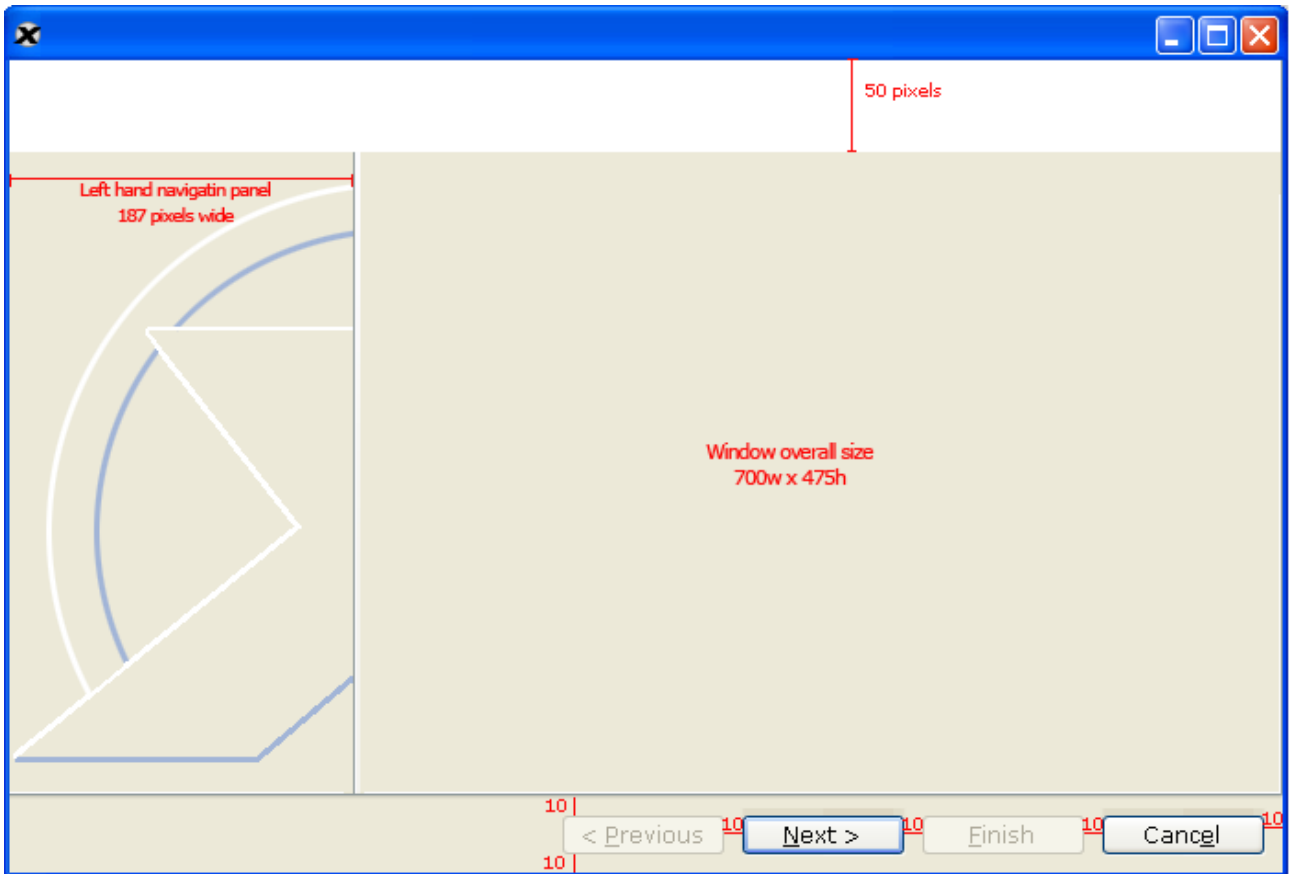
Older XP timeframe wizard standards

<http://msdn2.microsoft.com/en-us/library/ms997609.aspx>

Over all size

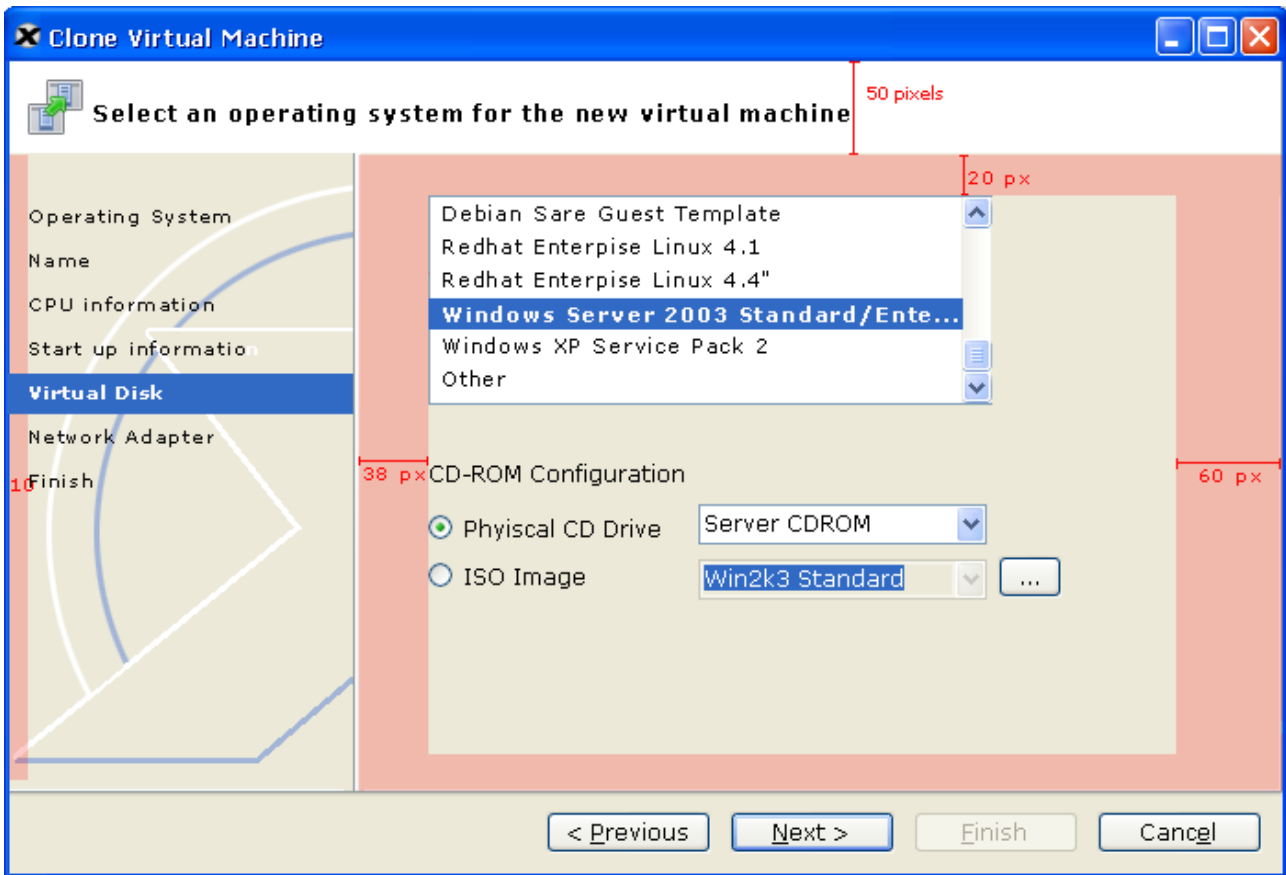
NOTE: Due to large amount of content on some pages, the overall size is:

750p x 475p



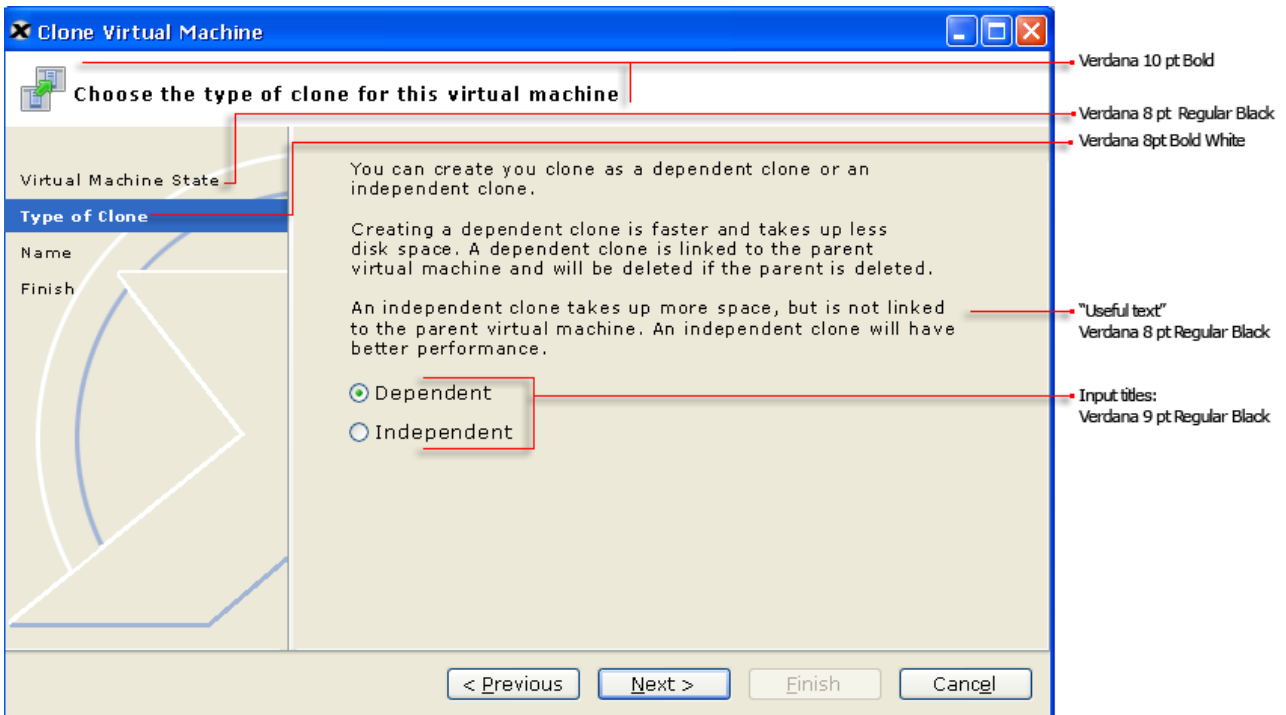
NOTE- The background image should be the "rocks"

Borders - "No text zone"



NOTE- The background image should be the "rocks"

Text sizes



NOTE- The background image should be the "rocks"

Left pane graphic... we may change this to something "sexier"

Note the blue background is due to a bug with .png files. The background should be transparent.
(file name rocks_bkgd.png)



Page parts - Title, main instruction, icon

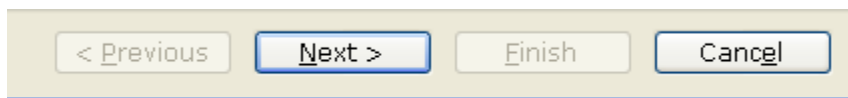
The screenshot shows a wizard window titled "Clone Virtual Machine". The main instruction is "Choose the type of clone for this virtual machine". A small icon of a document with a green arrow is next to the instruction. The left pane shows "Virtual Machine State" and "Type of Clone" with a "Name" field. The right pane contains text about independent and dependent clones. Red boxes and lines highlight the title bar, the main instruction, and the icon.

- Title bar** to identify the name of the wizard.
- Main instruction** to explain the user's objective with the page
- Icon** appropriate for content... in this case the clone icon
Size: 32 x 32

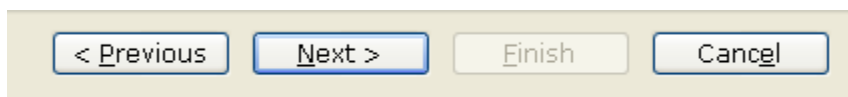
Buttons

The buttons at the bottom of the page will be active/inactive (enabled/disabled) depending on the current step of the wizard

First Step - Only Next and Cancel are enabled

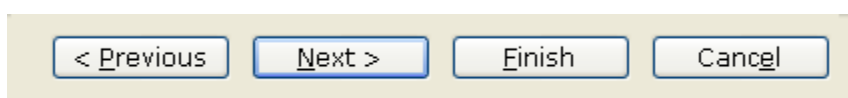


Middle Steps - Previous, Next and Cancel are enabled



2nd to last Step- All buttons enabled.

Note - finish button allows the user to skip the finish screen.



Last Step - Previous, Finish and Cancel are enabled

< Previous

Next >

Finish

Cancel